

# FEDIT USER GUIDE

## CONTENTS

1	Introduction .....	2
1.1	Description .....	2
1.2	Trademark References .....	2
2	End User License Agreement (EULA).....	3
2.1	Terms of Use .....	3
2.2	License Grant.....	3
2.3	Ownership .....	3
2.4	Copies.....	3
2.5	Warrenty .....	3
2.6	Upgrades, enhancements, and new features.....	3
2.7	Entire Agreement .....	3
3	Installing, Licenses, and Updating .....	4
3.1	Installing Windows .....	4
3.2	Installing Mac .....	5
3.3	Installing Native Linux .....	6
3.4	Installing Linux/Wine.....	7
3.5	Trial version, licenses, and upgrading .....	8
4	Getting Started.....	10
4.1	Performing a dump from your MFC-101 via Fractal-Bot .....	10
4.2	Opening your dump file in Fedit.....	12
4.3	On Screen Help and Data Entry .....	13
4.4	Presets Screen .....	15
4.5	Songs Screen .....	17
4.6	Sets Screen .....	19
4.7	Midi / Setup Screens .....	20
4.8	Saving your dump file in Fedit .....	23
4.9	Sending the updated dump file to your MFC-101 via Fractal-Bot .....	24
4.10	FADumpCheck .....	26
4.11	Upgrade Sysex .....	28
4.12	MFC Labels .....	30
4.13	Printing Song/Set Lists and Labels .....	32
5	FAQs.....	34
5.1	What are the computer requirements for Fedit?.....	34
5.2	What MFC-101 models and firmware does Fedit support? .....	34
5.3	How does Fedit work? .....	34
5.4	Why do Bank/Song Limit values change automatically? .....	34
5.5	Why is my entry yellow? .....	35
5.6	Any concerns using the Ultra or Standard? .....	35
5.7	What is External Pedal Calibration on the Setup screen? .....	36
5.8	Does Fedit support displaying Display offsets? .....	36
5.9	Where can I get the latest news on Fedit? .....	36
5.10	My Anti-virus software has flagged an issue with the Fedit!.....	36
5.11	I'm having trouble with my purchase, license key, or have discovered a bug! .....	36
6	Appendix A.....	37
6.1	Performing a dump from your MFC-101 via Midi-OX.....	37
6.2	Sending the updated dump file to your MFC-101 via Midi-OX.....	38
7	Appendix B.....	39
7.1	FeditV2 Tips for Linux Users .....	39
8	Document History .....	40

## 1 INTRODUCTION

### 1.1 DESCRIPTION

Fedit is a utility that allows you to edit dump files generated by the Fractal Audio Systems MFC-101. The objective of this utility is to simplify configuration of the MFC-101 by allowing you to make changes on your PC then load them back to your MFC-101.

### 1.2 TRADEMARK REFERENCES

Axe-Fx (Standard, Ultra, II), MFC-101, Axe-Edit, and Fractal-Bot are registered names and property of Fractal Audio Systems. Screenshots are used with permission from Fractal Audio Systems. Additional information regarding Fractal Audio Systems and their products may be located on their website <http://www.fractalaudio.com>.

Any other names mentioned with-in this document are the property of their respective owners.

## 2 END USER LICENSE AGREEMENT (EULA)

### 2.1 TERMS OF USE

By installing or using this software, you indicate your agreement to the terms of this End User License Agreement (EULA). If you do not agree to the terms, you are not authorized to use or copy the software.

### 2.2 LICENSE GRANT

This agreement is for a user license allowing you to run the software in executable form. You may not rent or lease your software rights or License Grant. You may install the software on multiple devices permitted the licensed user is the primary user of the device. This License Grant does not provide any rights to repackage, redistribute, publish, or post the software to any publically accessible location that could be accessed by an individual not assigned a License Grant by the software developer.

### 2.3 OWNERSHIP

Ownership of the software and source code remains the sole property of the software developer. Your License Grant does not provide title, ownership, or the transfer/sale of any rights.

### 2.4 COPIES

Other than as provided in the License Grant section, you may only make copies of the software for individual use and archival purposes. It is the user's responsibility to ensure they have a backup or archival copy of the software for individual use.

### 2.5 WARRENTY

This software is provided "AS IS" and without warranty of any kind. The entire risk of using this software remains with you.

### 2.6 UPGRADES, ENHANCEMENTS, AND NEW FEATURES

Bug-fixes, upgrades, enhancements, and/or new features may be released from time to time. This content when available is downloadable free of charge to licensed users.

### 2.7 ENTIRE AGREEMENT

Unless otherwise expressly agreed in writing, this EULA is the sole agreement between you and the software developer.

## 3 INSTALLING, LICENSES, AND UPDATING

### 3.1 INSTALLING WINDOWS

#### WHERE: PC

Unzip the FeditV2\_setup.rar file with 7-Zip, WinRar, WinZip, or any other utility familiar with .rar files


If you do not wish to install rar utilities you may also download in .zip or .exe format:

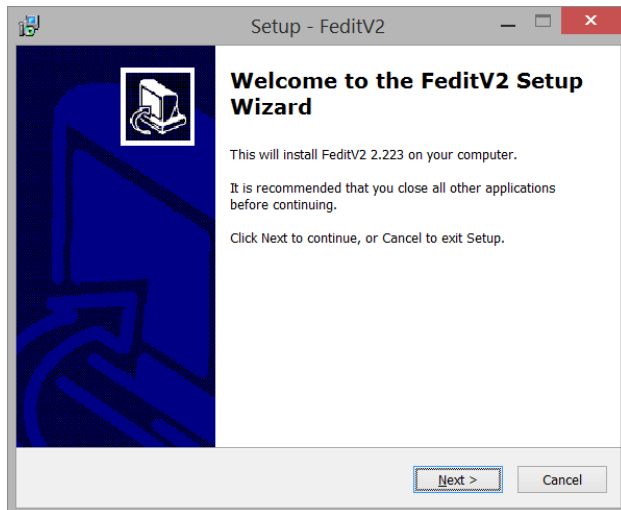
[http://www.eJozSoftware.com/downloads/FeditV2\\_setup.zip](http://www.eJozSoftware.com/downloads/FeditV2_setup.zip)

[http://www.eJozSoftware.com/downloads/FeditV2\\_setup.exe](http://www.eJozSoftware.com/downloads/FeditV2_setup.exe)

**NOTE:** The Google Chrome browser frequently falsely identifies .zip and .exe archives as malicious software and will prevent you from downloading them. It is recommend to use an alternate browser such as Internet Explorer, Firefox, or Safari when downloading the FeditV2\_setup.zip or .exe archive.

Run the FeditV2\_setup.exe file to begin the installation and follow the on screen instructions:

 FeditV2\_2.222\_setup.exe



The following additional files will be placed in your My Documents/fedit folder:

EULA.txt – End User License Agreement

ReleaseNotes.txt – Release Notes

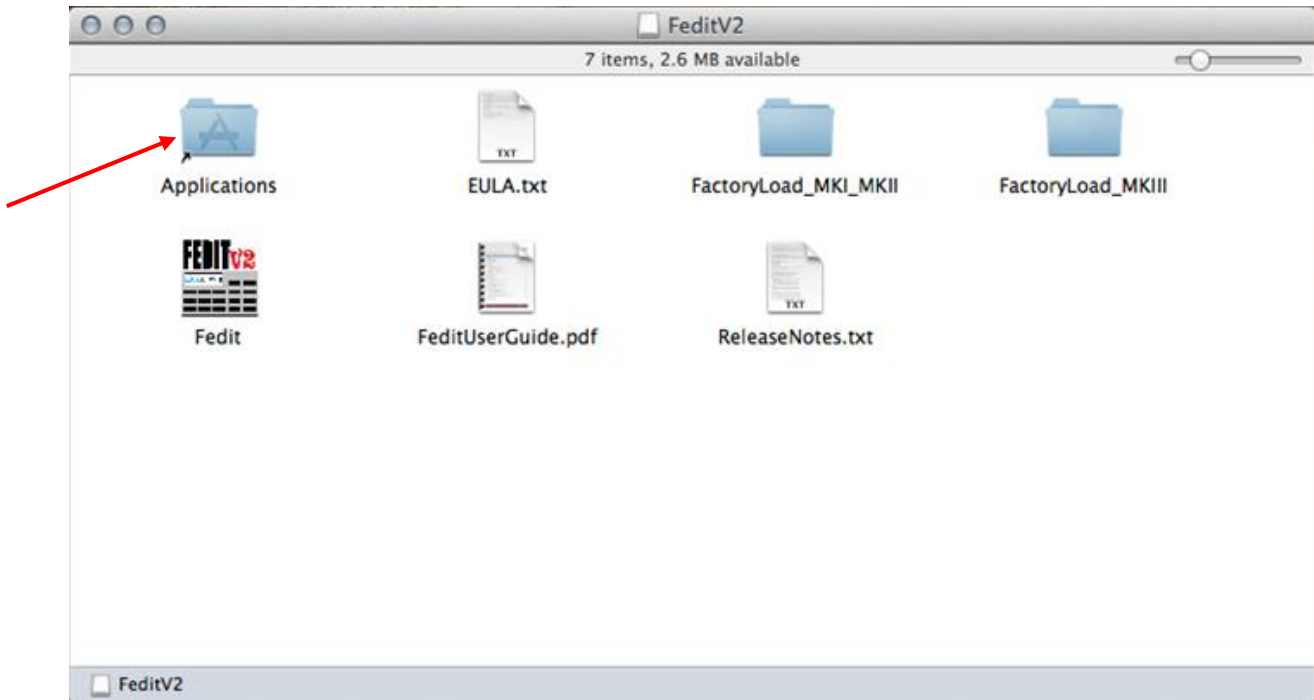
FactoryLoad\_MKI\_MKII – MFC Factory Load .syx dump files you can use to quickly get started configuring your MFC

FactoryLoad\_MKIII – MFC Factory Load .syx dump files you can use to quickly get started configuring your MFC

## 3.2 INSTALLING MAC

### WHERE: Mac

Open the FeditV2.dmg file and drag Fedit into the Applications folder



The following files are also available in the dmg file:

EULA.txt – End User License Agreement

FeditUserGuide.pdf – Fedit User Guide

ReleaseNotes.txt – Release Notes

FactoryLoad\_MKI\_MKII – MFC Factory Load .syx dump files you can use to quickly get started configuring your MFC

FactoryLoad\_MKIII – MFC Factory Load .syx dump files you can use to quickly get started configuring your MFC

### 3.3 INSTALLING NATIVE LINUX

Fedit on Linux is not officially supported by eJozSoftware however it will be supported on a best effort basis. Fedit has been tested successfully on Ubuntu 13.10. Installation instructions provided below may vary depending on your Linux distribution.

#### Installing unrar:

```
user@ubuntu:~$ uname -a
```

```
Linux ubuntu 3.11.0-12-generic #19-Ubuntu SMP Wed Oct 9 16:12:00 UTC 2013 i686 i686 GNU/Linux
```

```
user@ubuntu:~$ sudo apt-get install unrar
```

#### Installing FeditV2

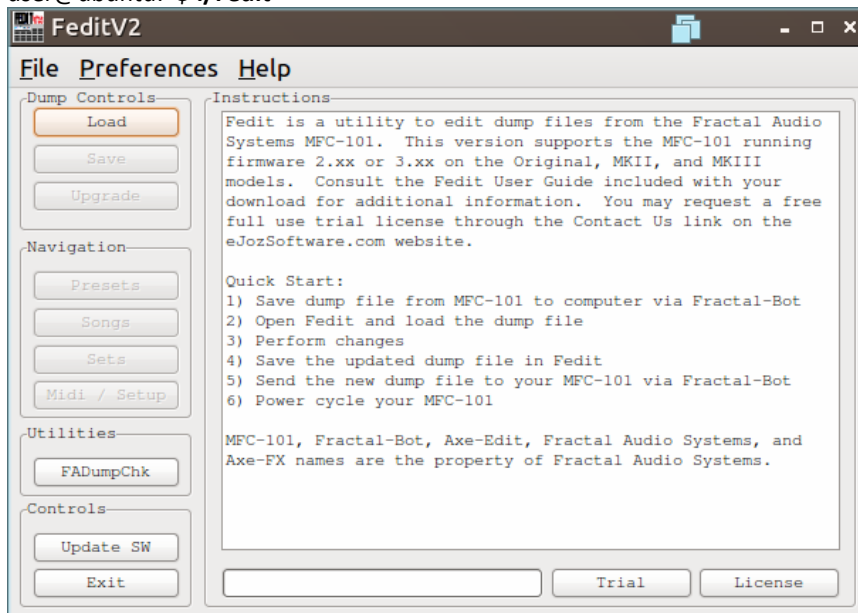
Download the FeditV2\_linux.rar file

```
user@ubuntu:~$ unrar x FeditV2_setup.rar
```

#### Running FeditV2

```
user@ubuntu:~$ cd FeditV2
```

```
user@ubuntu:~$ ./Fedit
```



The following files are also available in your .rar archive:

EULA.txt – End User License Agreement

FeditUserGuide.pdf – Fedit User Guide

ReleaseNotes.txt – Release Notes

FactoryLoad\_MKI\_MKII – MFC Factory Load .syx dump files you can use to quickly get started configuring your MFC

FactoryLoad\_MKIII – MFC Factory Load .syx dump files you can use to quickly get started configuring your MFC

**NOTE:** Drag/Drop between forms is not supported in the native Linux version of FeditV2 at this time

**NOTE:** Additional information can be found in Appendix B on how to increase/decrease screen resolution

### 3.4 INSTALLING LINUX/WINE

Fedit on Linux is not officially supported by eJozSoftware however FeditV2 easily runs under Wine and will be supported on a best effort basis. Fedit has been tested successfully on Ubuntu 13.10 under Wine 1.4. Installation instructions provided below may vary depending on your Linux distribution.

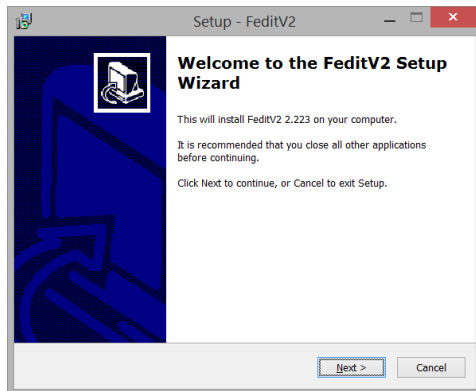
#### Installing Wine and unrar:

```
user@ubuntu:~$ uname -a  
Linux ubuntu 3.11.0-12-generic #19-Ubuntu SMP Wed Oct 9 16:12:00 UTC 2013 i686 i686 i686 GNU/Linux  
user@ubuntu:~$ sudo apt-get install wine1.4-i386  
user@ubuntu:~$ sudo apt-get install unrar
```

#### Installing FeditV2

Download the latest Windows .rar file from the eJozSoftware.com website

```
user@ubuntu:~/Downloads$ unrar e FeditV2_setup.rar  
user@ubuntu:~/Downloads$ wine FeditV2_setup.exe
```



The following additional files will be placed in your \$HOME/Documents/fedit folder:

EULA.txt – End User License Agreement

ReleaseNotes.txt – Release Notes

FactoryLoad\_MKI\_MKII – MFC Factory Load .syx dump files you can use to quickly get started configuring your MFC

FactoryLoad\_MKIII – MFC Factory Load .syx dump files you can use to quickly get started configuring your MFC

#### Running FeditV2

If you chose not to create a desktop icon during installation FeditV2 can be launched as:

```
user@ubuntu:~/Downloads$ wine "$HOME/.wine/drive_c/Program Files/eJozSoftware/Fedit.exe"
```

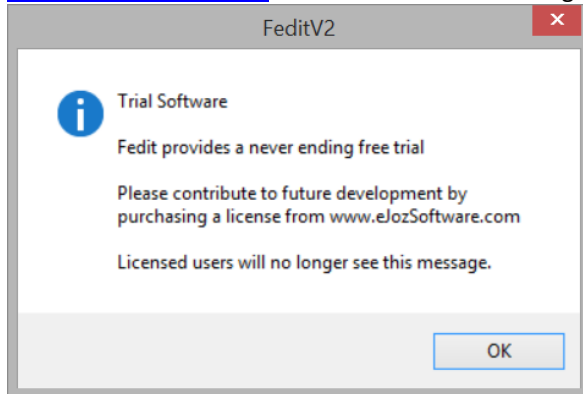
**NOTE:** For the best experience you need to perform the following after installing: Preferences->Linux/Wine Mode

**NOTE:** Additional information can be found in Appendix B on how to increase/decrease screen resolution and modify Wine's font dpi to improve the user experience.

### 3.5 TRIAL VERSION, LICENSES, AND UPGRADING

#### TRIAL VERSION

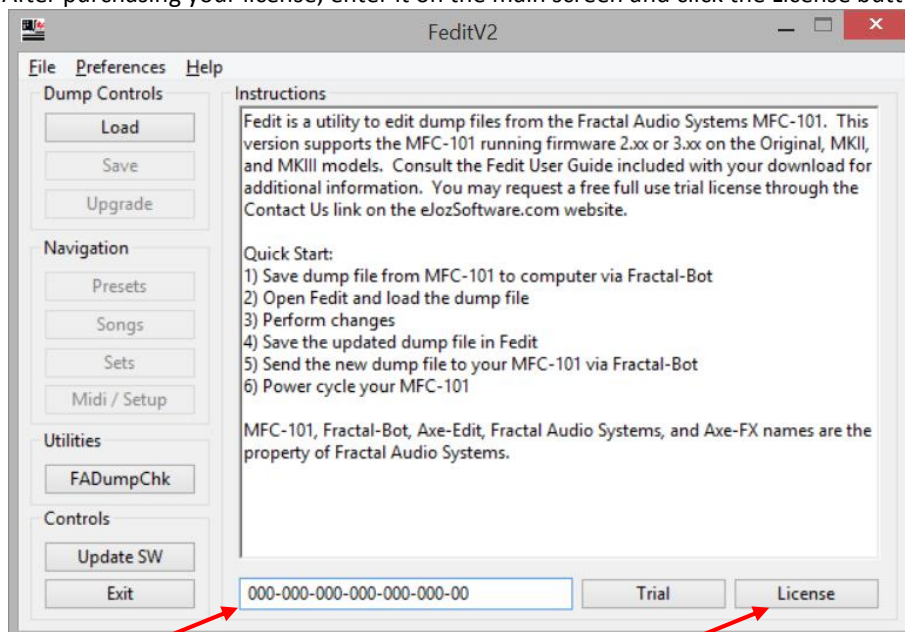
Trial is unrestricted and never expires. Please contribute to future development by purchasing a license from [www.eJozSoftware.com](http://www.eJozSoftware.com). Licensed users will no longer see this popup as start:



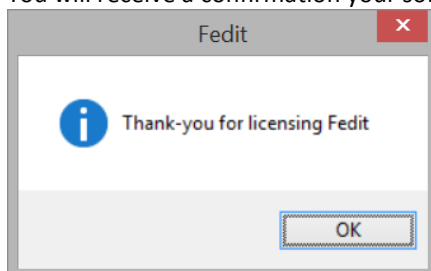
#### INSTALLING LICENCES

Licenses may be purchased at <http://www.eJozSoftware.com>.

After purchasing your license, enter it on the main screen and click the License button



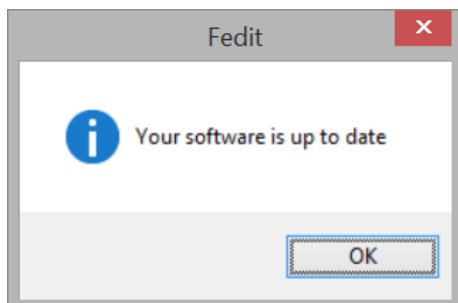
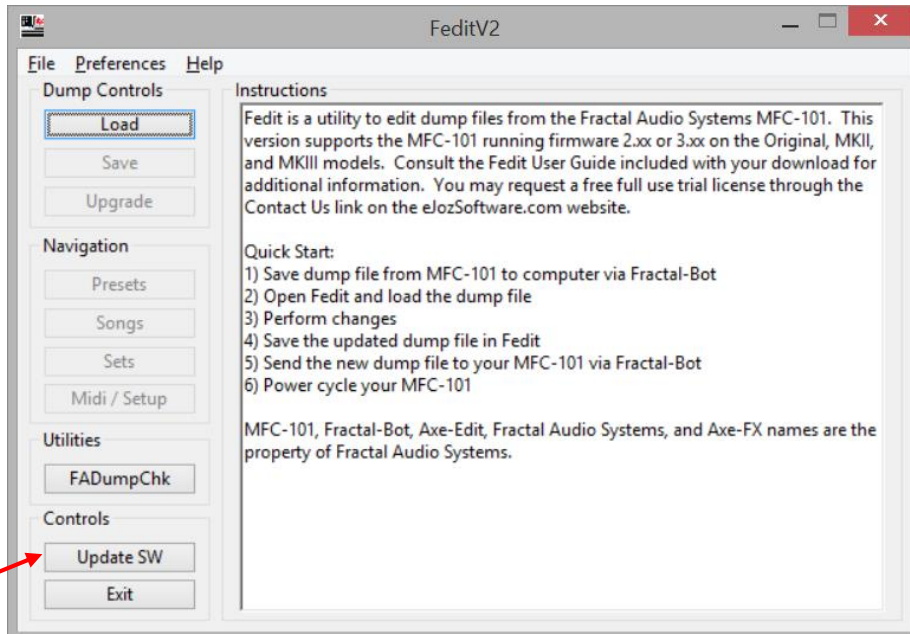
You will receive a confirmation your software has been licensed. You will now have full access to all controls.





## UPGRADING

Updated versions of the software may be released from time to time. These updates may include bug fixes, new features, and enhancements to support future firmware revisions. Download the latest version of Fedit from <http://www.eJozSoftware.com>. On the main navigator screen you may click the “Update SW” button and Fedit will inform you if a newer release is available for download.



**NOTE:** After downloading an update from Fedit you must install it manually

## 4 GETTING STARTED

### 4.1 PERFORMING A DUMP FROM YOUR MFC-101 VIA FRACTAL-BOT

You may use one of the provided FactoryLoad.syx files that came with your download or follow the instructions below to save a copy of your MFCs configuration. The provided FactoryLoad files can be located on Windows and Linux in your Documents/fedit folder after installing the software. Mac users will find the files included within their .dmg.

#### Connections:

Connect MFC-101 to Axe-FX II via Ethernet cable

Connect MFC-101 MIDI Out to Axe-FX II Midi In

Connect Axe-FX II to Computer via USB cable

#### Axe-FX II:

I/O -> MIDI -> SEND REALTIME SYSEX: None

USB ADAPTER MODE: On

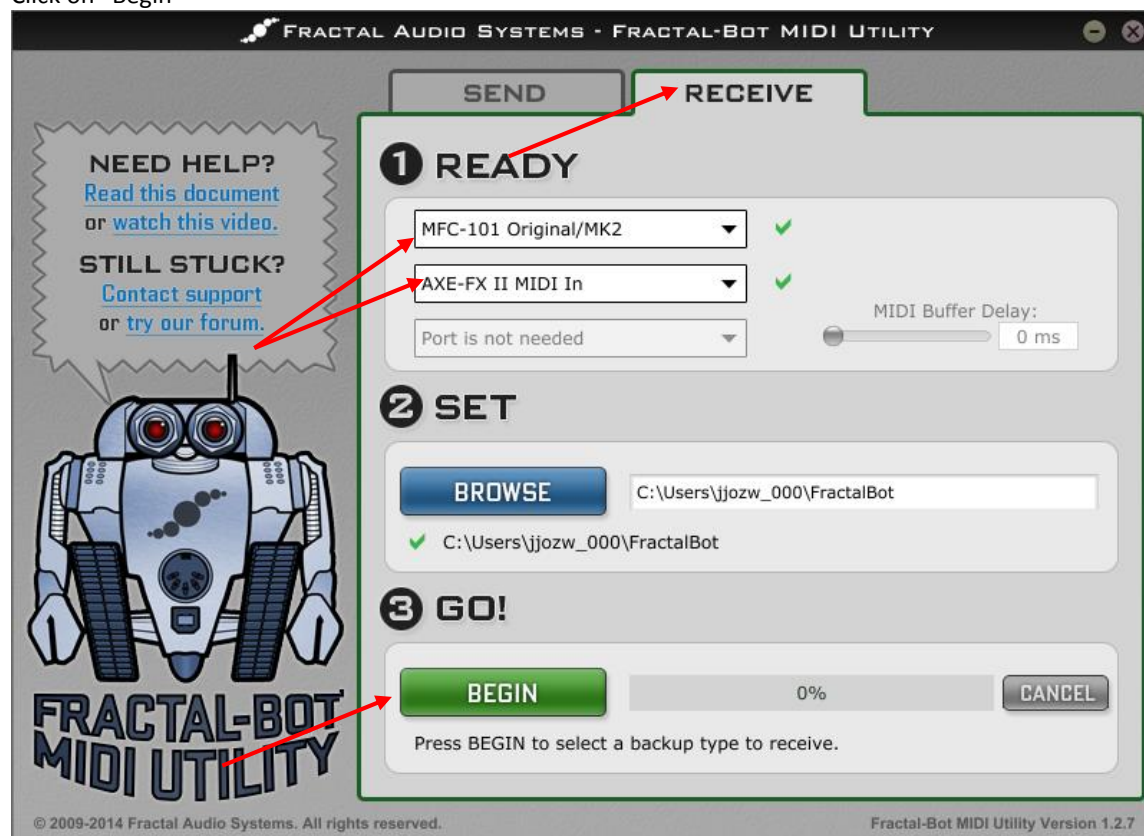
#### Computer:

Open Fractal-Bot and click on "Receive"

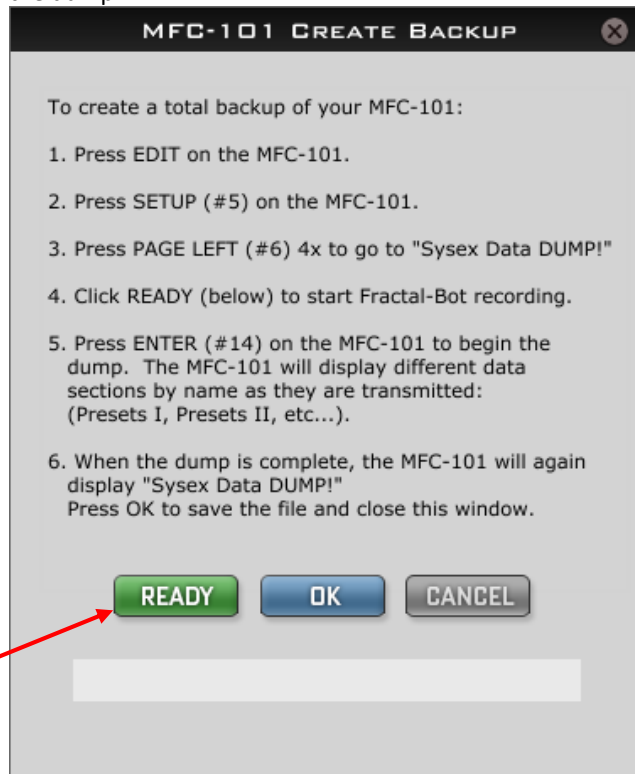
Select either "MFC-101 Original/MK2" or "MFC-101 MK3"

Select "Axe-FX II MIDI In"

Click on "Begin"



Follow the on-screen instructions to place the MFC-101 in "Sysex Data DUMP!" mode then click "READY" to start the dump:



#### Axe-FX II:

I/O -> MIDI -> SEND REALTIME SYSEX: All (or Tuner if that was your previous value)  
USB ADAPTER MODE: Off

**NOTE:** If you have issues sending or receiving a valid dump with Fractal-Bot please view the appendix for an example using an Alesis USB->MIDI cable and Midi-OX.

## 4.2 OPENING YOUR DUMP FILE IN FEDIT

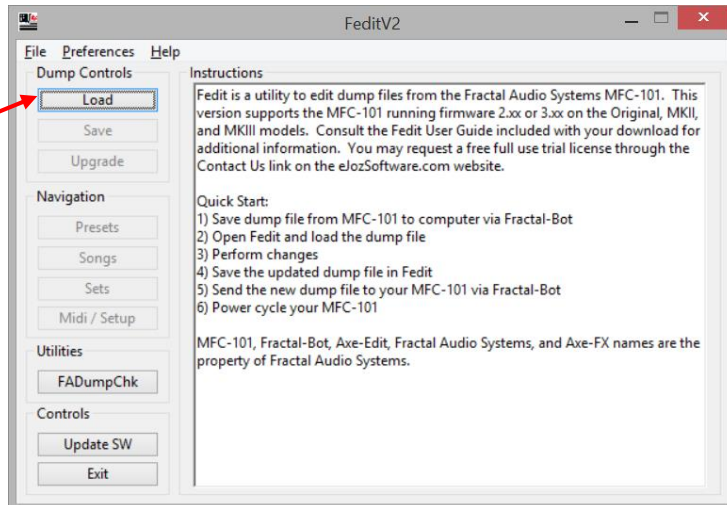
### WHERE: PC

Fedit may be started by running the Fedit.exe executable provided with-in the download

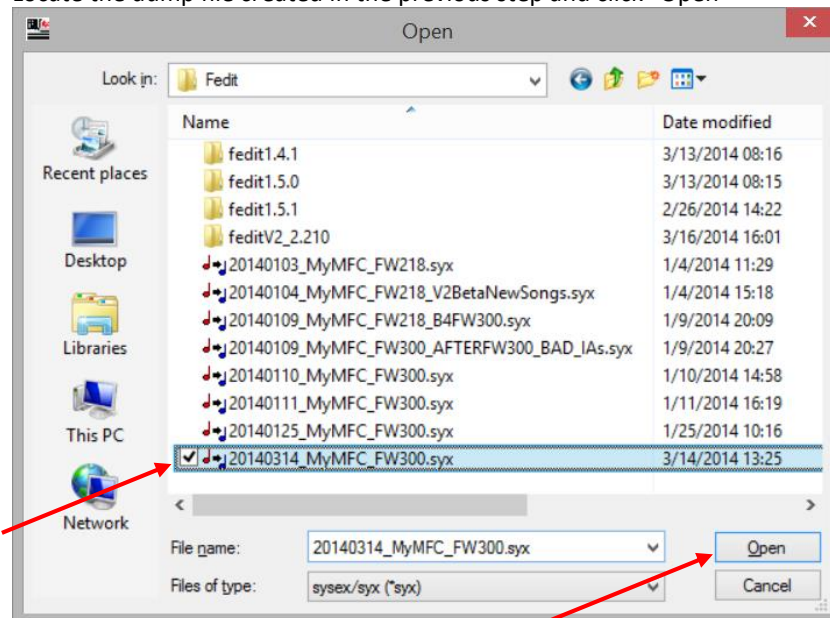


### WHERE: Fedit Main Menu

Click the "Load" button



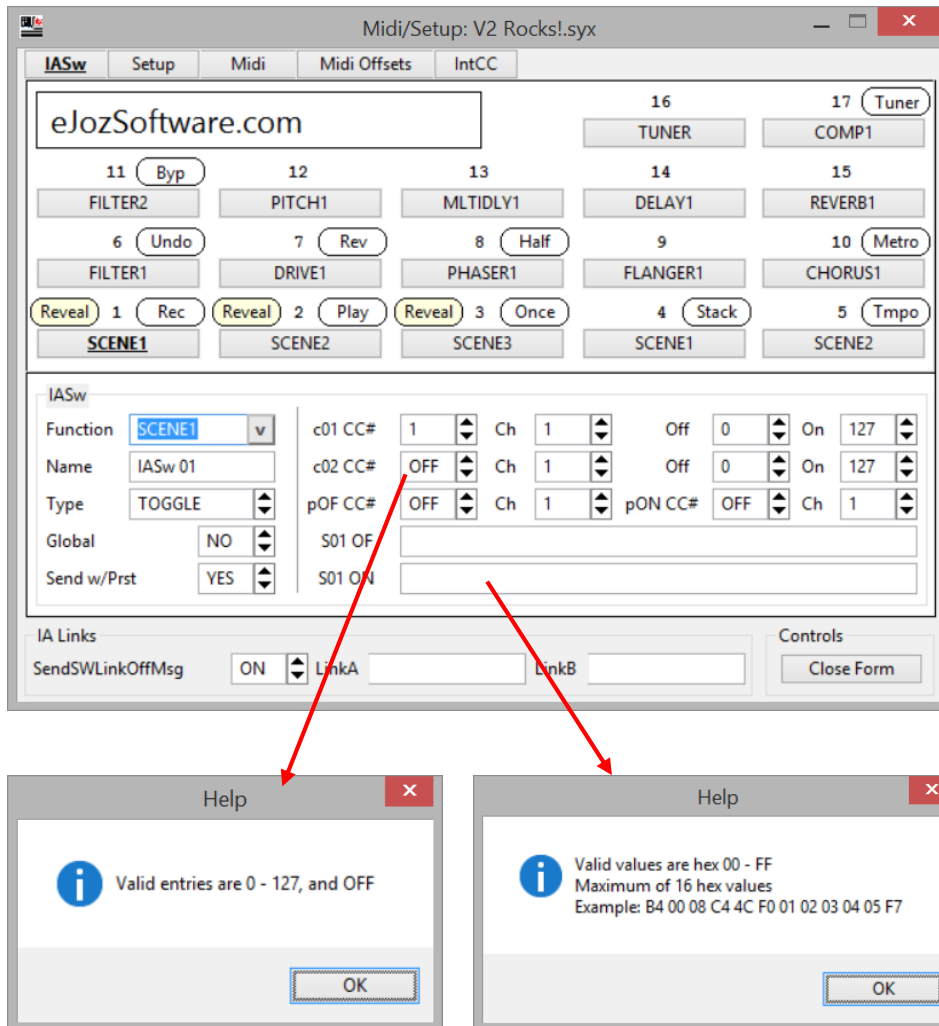
Locate the dump file created in the previous step and click "Open"



#### 4.3 ON SCREEN HELP AND DATA ENTRY

##### On Screen Help

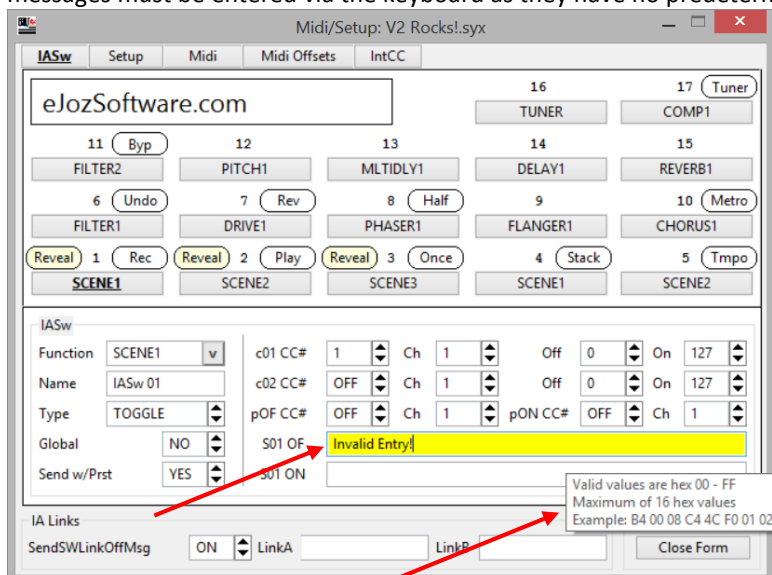
Right click on any text field to receive a listing of valid values for that field:



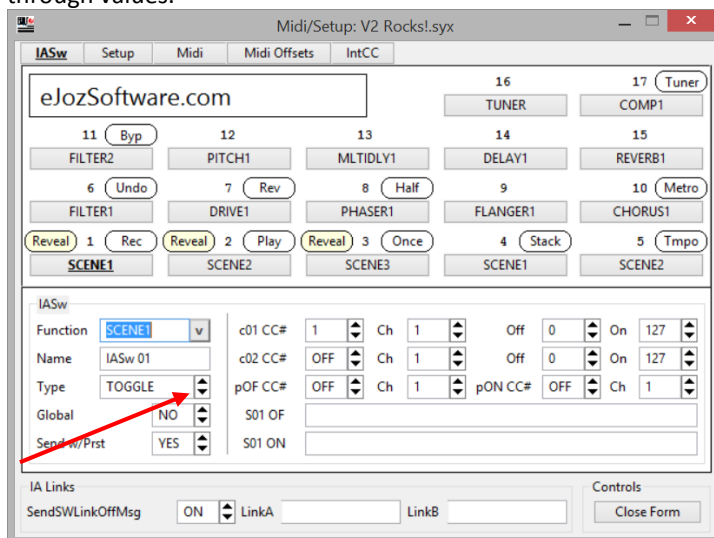
## Data Entry Options

Fedit is very powerful accepting data entry in numerous formats

- 1) You may type in the value if you are familiar with the values for the field. If you enter incorrect data the text field will turn yellow to inform you of an issue. The field will also provide a popup a help bubble to inform you of the correct data if you move the mouse over the field. The help bubble contains the same help information you can gather by right clicking on the field. A few fields such as Names and Custom messages must be entered via the keyboard as they have no predetermined values.



- 2) The up/down arrow keys, on screen up/down arrow buttons, and the mouse wheel can be used to scroll through values.



**NOTE:** The mouse cursor must be hovering over a text field to scroll through the values using the mouse wheel. If you have issues with the mouse wheel skipping every other value while scrolling you can set Preferences->Half Mouse Wheel Mode to correct the issue.

**NOTE:** You may invert the arrow keys and/or mouse wheel input under Preferences->Invert

#### 4.4 PRESETS SCREEN

## WHERE: Fedit Presets

Allows you to modify preset related parameters found under EDIT->PRESET on your MFC-101:

Presets: V2 Rocks!.syx

0-49	50-99	100-149	150-199	200-249	250-299	300-349	350-383
<b>Presets 0-49</b>							
000 C. Ann Main	001 S Tape Delay	002 JustAGirl Keys	003 EJ Clean Main	004 Ubber Main			
005 Spawn Main	006 Gimmie 3 Steps	007 Rebel Yell Keys	008 Switch	009 867-5309			
010 Call Me	011 JustAGirl Dirty	012 FASModLead	013 PopGate '88	014 FASModLead S2+3			
015 867-5309 S2+3	016 JustAGirlKeys+3	017 MFC-101	018 MFC-101	019 MFC-101			
020 MFC-101	021 MFC-101	022 MFC-101	023 MFC-101	024 MFC-101			
025 MFC-101	026 MFC-101	027 MFC-101	028 MFC-101	029 MFC-101			
030 MFC-101	031 MFC-101	032 MFC-101	033 MFC-101	034 MFC-101			
035 MFC-101	036 MFC-101	037 MFC-101	038 MFC-101	039 MFC-101			
040 MFC-101	041 MFC-101	042 MFC-101	043 MFC-101	044 MFC-101			
045 MFC-101	046 MFC-101	047 MFC-101	048 MFC-101	049 MFC-101			

Preset 000 C. Ann Main    Alt GBL    Custom

XS	XP	ProgChg	IntCC	IASw
XS1 # <span style="border: 1px solid gray; padding: 2px;">GBL</span>	Ch <span style="border: 1px solid gray; padding: 2px;">1</span>	Typ <span style="border: 1px solid gray; padding: 2px;">HDW</span>	Off <span style="border: 1px solid gray; padding: 2px;">0</span>	On <span style="border: 1px solid gray; padding: 2px;">127</span>
XS2 # <span style="border: 1px solid gray; padding: 2px;">GBL</span>	Ch <span style="border: 1px solid gray; padding: 2px;">1</span>	Typ <span style="border: 1px solid gray; padding: 2px;">HDW</span>	Off <span style="border: 1px solid gray; padding: 2px;">0</span>	On <span style="border: 1px solid gray; padding: 2px;">127</span>
XS3 # <span style="border: 1px solid gray; padding: 2px;">GBL</span>	Ch <span style="border: 1px solid gray; padding: 2px;">1</span>	Typ <span style="border: 1px solid gray; padding: 2px;">HDW</span>	Off <span style="border: 1px solid gray; padding: 2px;">0</span>	On <span style="border: 1px solid gray; padding: 2px;">127</span>
XS4 # <span style="border: 1px solid gray; padding: 2px;">GBL</span>	Ch <span style="border: 1px solid gray; padding: 2px;">1</span>	Typ <span style="border: 1px solid gray; padding: 2px;">HDW</span>	Off <span style="border: 1px solid gray; padding: 2px;">0</span>	On <span style="border: 1px solid gray; padding: 2px;">127</span>

**Controls**

Clear Preset  
☐ Drag PC  
Load Names  
Set Perfmode  
Close Form

**NOTE:** The checkbox "Drag/Drop ProgChg Values" controls values on the ProgChg tab during Drag/Drop

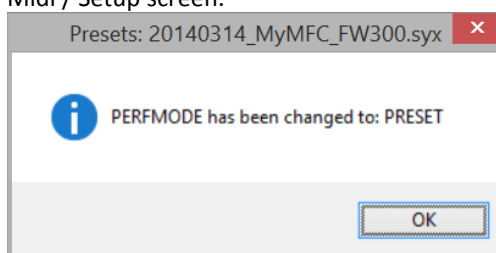
Unchecked: Values on the ProgChg tab remain with the preset button and are not included in Drag/Drop

Checked: Values on the ProgChg tab are included when Drag/Drop operations are performed

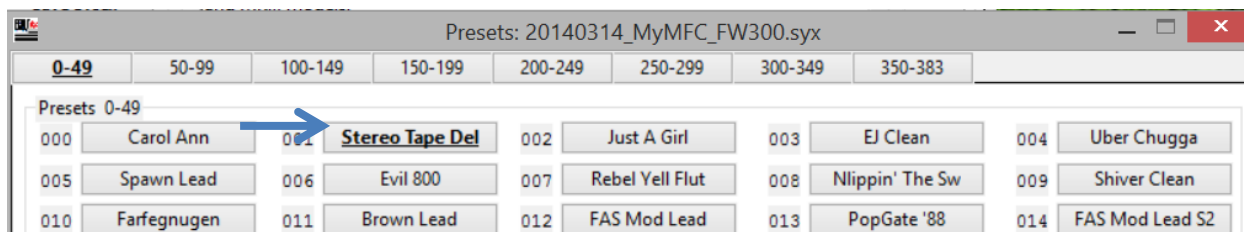
**NOTE:** The “Load Names” button will populate your preset names in Fedit from a dump text dump file created using Axe-Edit 3.x. To create the text file to load use the following navigation in **Axe-Edit**:

**Tools -> Export As Text -> Preset List...**

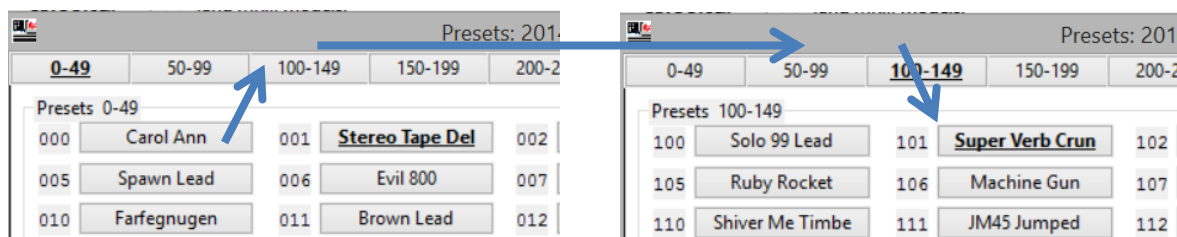
**NOTE:** The “Set Perfmode” button will change PERFMODE=PRESET. This is the same setting as PERFMODE on the Midi / Setup screen.



The Presets form allows the preset buttons to perform Drag/Drop operations. You may Drag/Drop between preset buttons to swap the location of the presets. Holding down the CTRL while performing a Drag/Drop will perform a copy to rather than swapping.

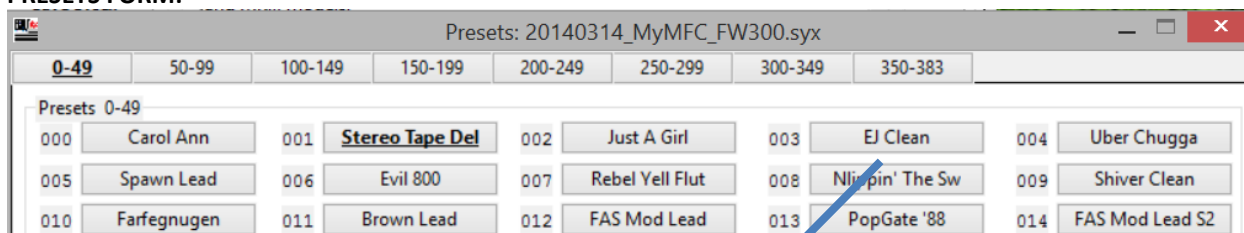


You can perform Drag/Drop operation between presets on separate tabs by holding the down the mouse button for the Drag/Drop then moving the mouse over the tab of your choice and the tab will change to that page:

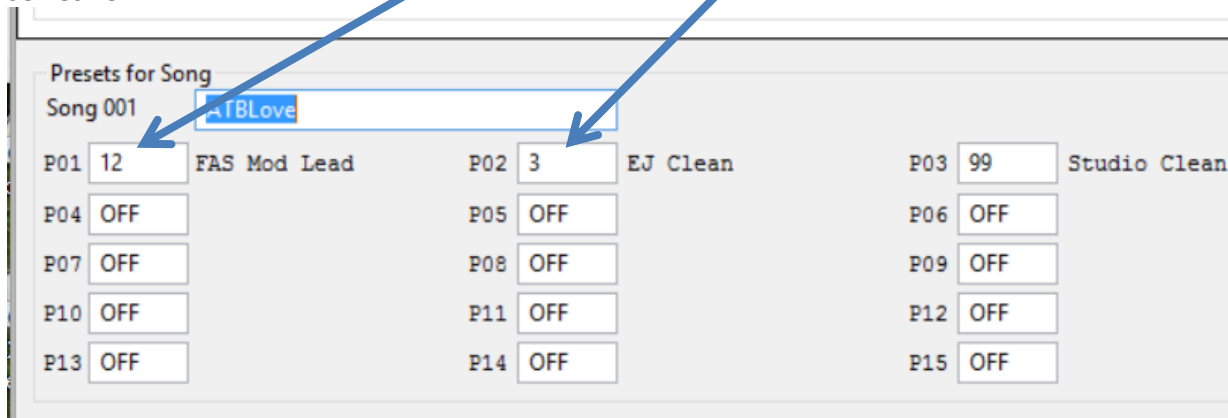


The Presets and Songs forms work together. Drag/Drop the preset buttons to the Songs form presets section rather than having to type in the preset numbers when creating your songs.

#### PRESETS FORM:



#### SONGS FORM:





## 4.5 SONGS SCREEN

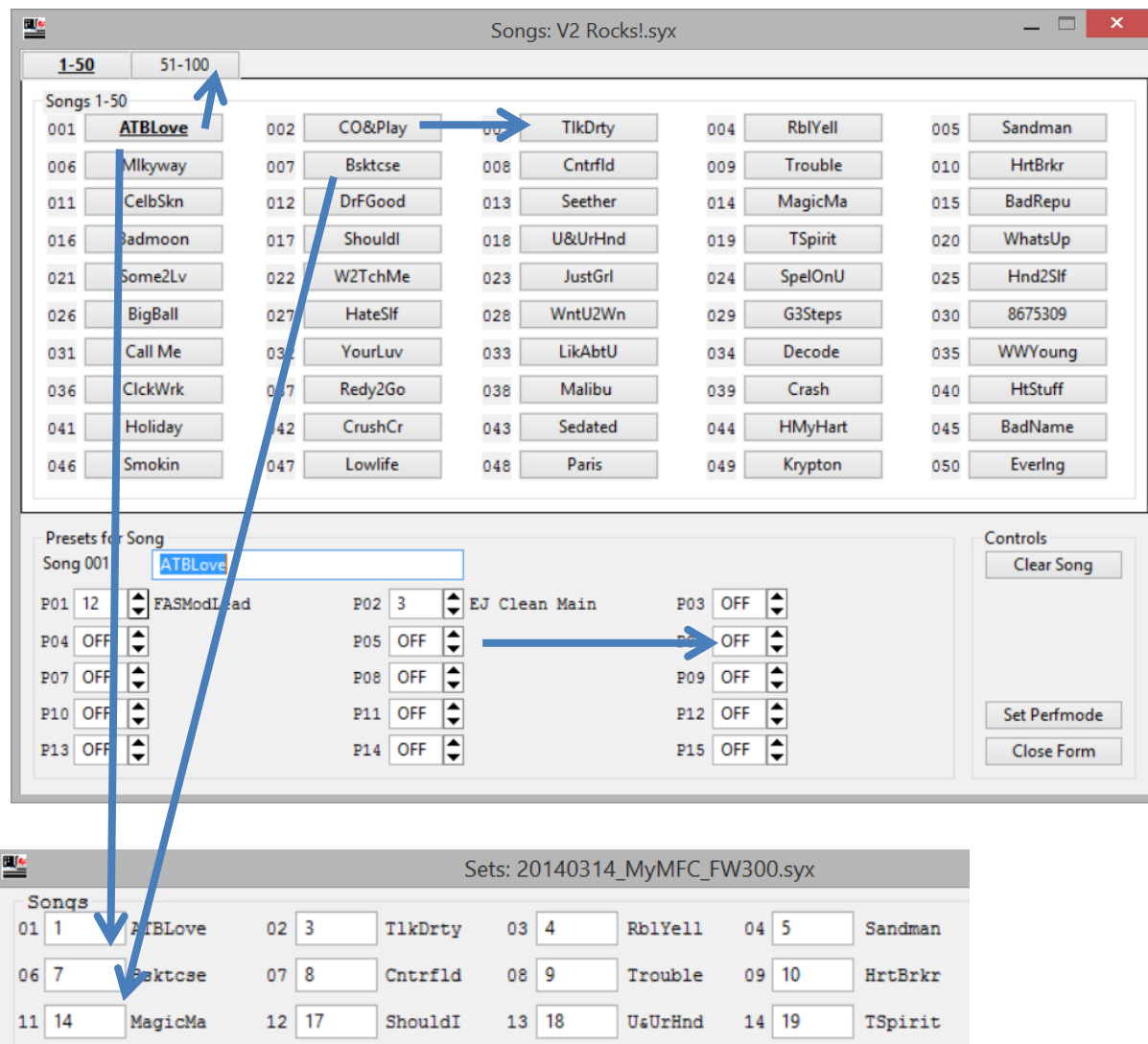
### WHERE: Fedit Songs

Allows you to modify song related parameters found under EDIT->SONG/SET on your MFC-101:

The Songs form allows the song buttons to perform Drag/Drop operations. You may Drag/Drop between song buttons to swap the location of the songs. Holding down the CTRL while performing a Drag/Drop will perform a copy to rather than swapping.

You may also Drag/Drop between the combo boxes to swap the location of presets with-in a song. Holding down the CTRL while performing a Drag/Drop will perform a copy to rather than swapping.

The Songs and Sets forms work together. Drag/Drop the song buttons to the Sets form rather than having to type in the song numbers when creating set lists.



**NOTE:** The "Set Perfmode" button will change PERFMODE=SONG. This is the same setting as PERFMODE on the Midi / Setup screen.

# Offline Songs (Preferences->Enable Offline Songs)

**\*NOTE\* THIS FEATURE IS FOR THOSE THAT MAINTAIN THEIR MFC-101 WITH FEDIT V2**  
**OFFLINE SONG INFORMATION IS NOT STORED ON THE MFC-101**  
**OFFLINE SONG INFORMATION IS STORED IN DOCUMENTS/FEDIT/FILENAME.OFFLSONG**

Q) So what the <insert your favorite curse here> is an offline song?!

A) They are the same as songs 1-100 on your MFC-101 but Fedit stores them on your computer

Q) How many songs can I configure?

A) You have access to a total of 250 songs. 1-100 on your MFC-101, 101-250 are stored on your PC

Q) What are the limitations with offline songs?

A) **Only songs 1-100 are available on the MFC-101 and can be assigned to set lists**

A) If you rearrange presets on Axe-Fx without making the same changes in Fedit they will be out of sync

Q) So why would I even consider using this feature?

A) Honestly, it's a feature for me. Those using song/set mode will likely appreciate it as well.

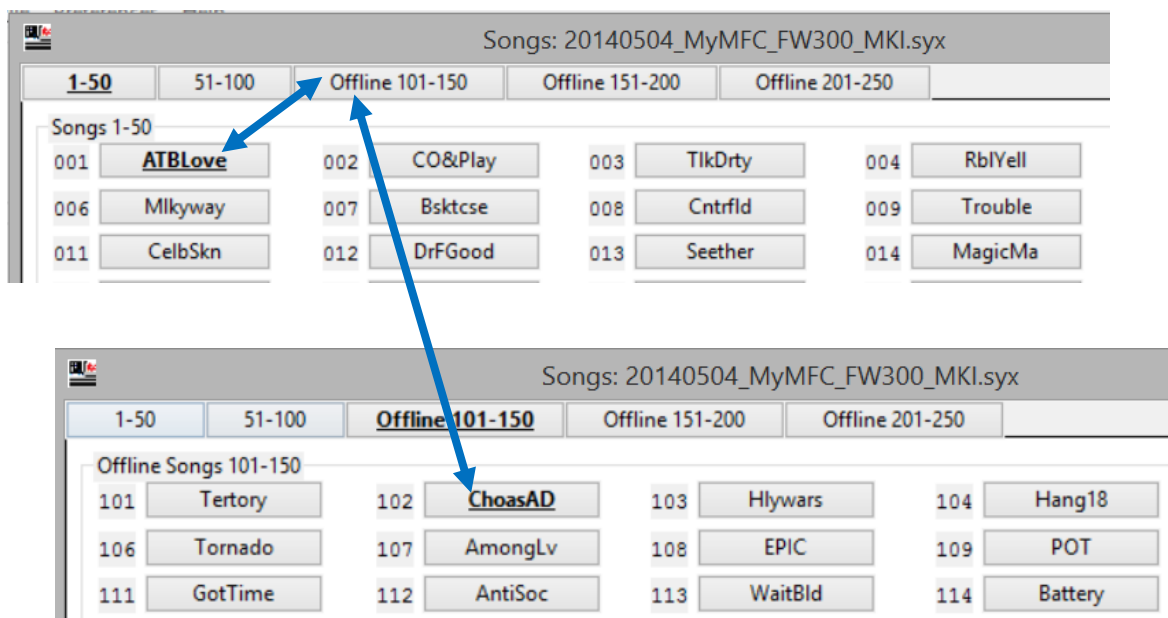
A) My presets never move on the Axe-Fx, I just keep appending new ones so it's always in sync

A) I can never remember those awesome presets I want for certain songs, now I don't have to!

Q) How can I swap songs from online (1-100) to offline (101-250) and vice versa?

A) Just Drag & Drop to swap (holding CTRL (Windows) or OPTION (Mac) will copy rather than swap)

A) Example: We swap ATBLove for ChoasAD. Set lists previously with ATBLove now have ChoasAD.



#### 4.6 SETS SCREEN

**WHERE: Fedit Sets**

Allows you to modify Set related parameters found under EDIT->SONG/SET on your MFC-101:

The Sets form allows the set buttons to perform Drag/Drop operations. You may Drag/Drop between set buttons to swap the location of the sets. Holding down the CTRL while performing a Drag/Drop will perform a copy to rather than swapping.

You may also Drag/Drop between the combo boxes to swap the location of the songs in your set list. Holding down the CTRL while performing a Drag/Drop will perform a copy to rather than swapping.

Sets: V2 Rocks!.syx

Songs

01	1	ATBLove	02	3	TlkDrty	03	4	RblYell	04	5	Sandman	05	6	Mlkyway
06	7	Bsktce	07	8	Cntrfld	08	9	Trouble	09	10	HrtBrkr	10	13	Seether
11	14	MagicMa	12	17	Shouldr	13	18	UsUrHnd	14	19	ISpirit	15	20	WhatsUp
16	21	Some2Lv	17	23	JustGr1	18	24	SpelOnU	19	25	Hnd2S1f	20	27	HateS1f
21	28	WntU2Wn	22	29	G3Steps	23	30	8675309	24	31	Call Me	25	32	YourLuv
26	33	LikAbtU	27	34	Decode	28	35	WYYoung	29	36	ClckWrk	30	37	Redy2Go
31	37	Redy2Go	32	39	Crash	33	40	HtStuff	34	41	Holiday	35	42	CrushCr
36	OFF		37	OFF		38	OFF		39	OFF		40	OFF	
41	OFF		42	OFF		43	OFF		44	OFF		45	OFF	
46	OFF		47	OFF		48	OFF		49	OFF		50	100	Generic

Set Lists

Set 01

GenGap1

GenGap1

Charity

R4Life

Wedding

All

BeachHs

DecBeac

JanBeac

Legion

Set 10

Controls

Clear Set

Set Perfmode

Close Form

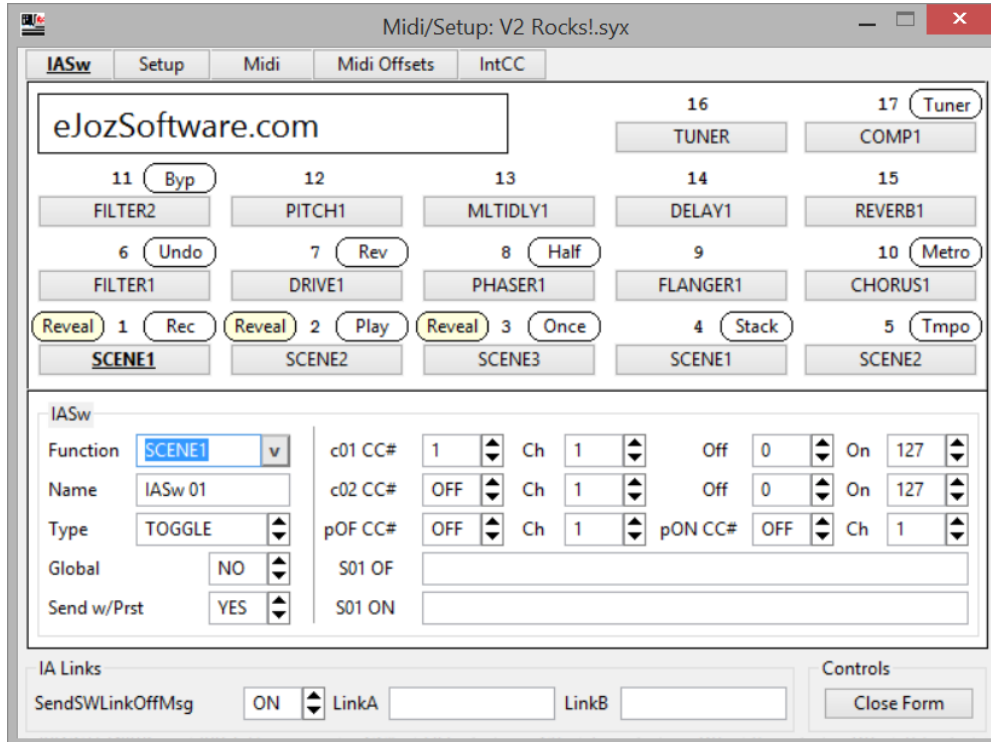
**NOTE:** The “Set Perfmode” button will change PERFMODE=SET## for the active set. This is the same setting as PERFMODE on the Midi / Setup screen. In this example Set 01 GenGap1 is the active button so PERFMODE would be set to SET01.

## 4.7 MIDI / SETUP SCREENS

### WHERE: Fedit Midi / Setup

Allows you to modify parameters found under EDIT->MIDI and EDIT->SETUP on your MFC-101.

These screens have been combined in Fedit V2 to provide a better overview of the MFC Configuration.



**NOTE:** IA Switches with the yellow Reveal icons will call up presets when pressed unless you enter Reveal mode on your MFC. To enter Reveal mode on your MFC you press down the Reveal button prior then when you click the IA Switch you will get its function rather than a preset. You may change the number of IA Switches hidden behind Reveal by adjusting the BankSize on the Setup tab.

**NOTE:** IA Switches with the white Looper Control icons will display when Looper Control on the Setup tab is set to a value other than OFF. To access these Looper Controls on your MFC, you press down the Reveal button (LONG or SHORT). You must also have a Looper block in your preset on the Axe-Fx.

Midi/Setup: V2 Rocks!.syx

IASw **Setup** Midi Midi Offsets IntCC

**General**

Axe-FX Mode  PerfMode  BeachHs

BankStyle  BankSize  FirstPrstSwitch

GlobalPreset  Looper Control  Bank/Song Limit

EditMenu  Axe-FX IAOFFLed  Bank/Song Wrap

SaveEditsSwitch  Display Contrast  HoldAxeTap=Tune

**External Switch Type**

XS1 Type

XS2 Type

XS3 Type

XS4 Type

**External Pedal Calibration**

XP1 Min  Max

XP2 Min  Max

XP3 Min  Max

XP4 Min  Max

FW Version  FW Checksum  Controls

FW ImgAddr  FW ImgSize  Close Form

Midi/Setup: V2 Rocks!.syx

IASw Setup **Midi** Midi Offsets IntCC

**General**

Axe-Fx Midi Ch  Use Port

TotalSync  Rx Channel  RxProgramChange

**Global XS**

XS1#  Ch  Typ  Off  On

XS2#  Ch  Typ  Off  On

XS3#  Ch  Typ  Off  On

XS4#  Ch  Typ  Off  On

**Global XP**

XP1#  Ch  Beg  Min  Max

XP2#  Ch  Beg  Min  Max

XP3#  Ch  Beg  Min  Max

XP4#  Ch  Beg  Min  Max

**PC / Tx Maps**

ProgChgMap	TxMap
000 0	000 0
001 1	001 1
002 2	002 2
003 3	003 3
004 4	004 4
005 5	005 5
006 6	006 6
007 7	007 7
008 8	008 8
009 9	009 9

Prev. Next

Controls

Close Form

Midi/Setup: V2 Rocks!.syx

IASw Setup Midi **Midi Offsets** IntCC

Midi Channel Names

Ch 01	Chan 01	Ch 02	Chan 02	Ch 03	Chan 03	Ch 04	Chan 04
Ch 05	Chan 05	Ch 06	Chan 06	Ch 07	Chan 07	Ch 08	Chan 08
Ch 09	Chan 09	Ch 10	Chan 10	Ch 11	Chan 11	Ch 12	Chan 12
Ch 13	Chan 13	Ch 14	Chan 14	Ch 15	Chan 15	Ch 16	Chan 16

Midi Display Offsets

Axe-Fx	OFF	MFC	OFF
Ch 01	OFF	Ch 02	OFF
Ch 03	OFF	Ch 04	OFF
Ch 05	OFF	Ch 06	OFF
Ch 07	OFF	Ch 08	OFF
Ch 09	OFF	Ch 10	OFF
Ch 11	OFF	Ch 12	OFF
Ch 13	OFF	Ch 14	OFF
Ch 15	OFF	Ch 16	OFF

Controls

Close Form

Midi/Setup: V2 Rocks!.syx

IASw Setup Midi Midi Offsets **IntCC**

IntCC01 Name	IntCC01	CC#	OFF	Ch	1	Off	0	On	127
IntCC02 Name	IntCC02	CC#	OFF	Ch	1	Off	0	On	127
IntCC03 Name	IntCC03	CC#	OFF	Ch	1	Off	0	On	127
IntCC04 Name	IntCC04	CC#	OFF	Ch	1	Off	0	On	127
IntCC05 Name	IntCC05	CC#	OFF	Ch	1	Off	0	On	127
IntCC06 Name	IntCC06	CC#	OFF	Ch	1	Off	0	On	127
IntCC07 Name	IntCC07	CC#	OFF	Ch	1	Off	0	On	127
IntCC08 Name	IntCC08	CC#	OFF	Ch	1	Off	0	On	127
IntCC09 Name	IntCC09	CC#	OFF	Ch	1	Off	0	On	127
IntCC10 Name	IntCC10	CC#	OFF	Ch	1	Off	0	On	127
IntCC11 Name	IntCC11	CC#	OFF	Ch	1	Off	0	On	127
IntCC12 Name	IntCC12	CC#	OFF	Ch	1	Off	0	On	127
IntCC13 Name	IntCC13	CC#	OFF	Ch	1	Off	0	On	127
IntCC14 Name	IntCC14	CC#	OFF	Ch	1	Off	0	On	127
IntCC15 Name	IntCC15	CC#	OFF	Ch	1	Off	0	On	127
IntCC16 Name	IntCC16	CC#	OFF	Ch	1	Off	0	On	127
IntCC17 Name	IntCC17	CC#	OFF	Ch	1	Off	0	On	127

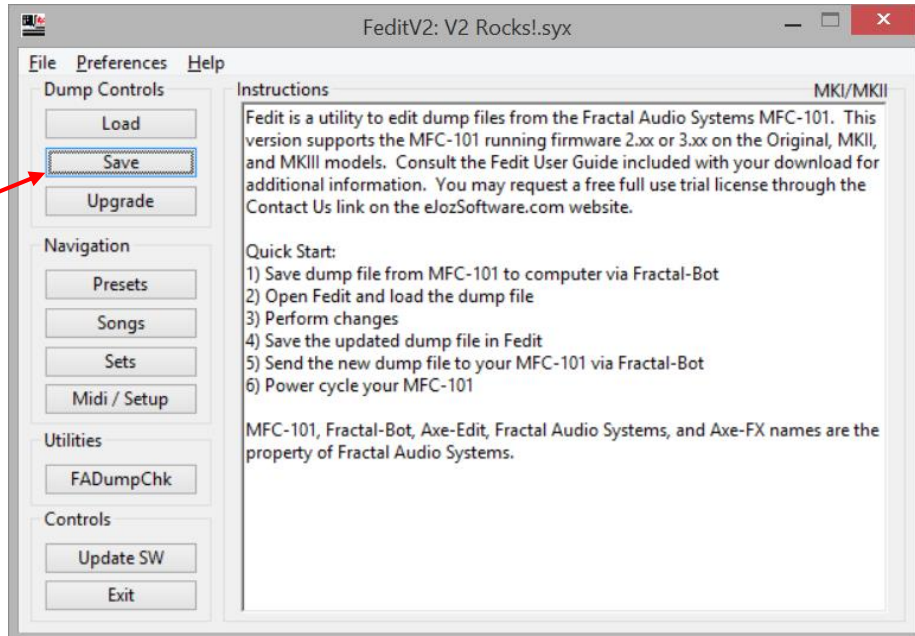
Controls

Close Form

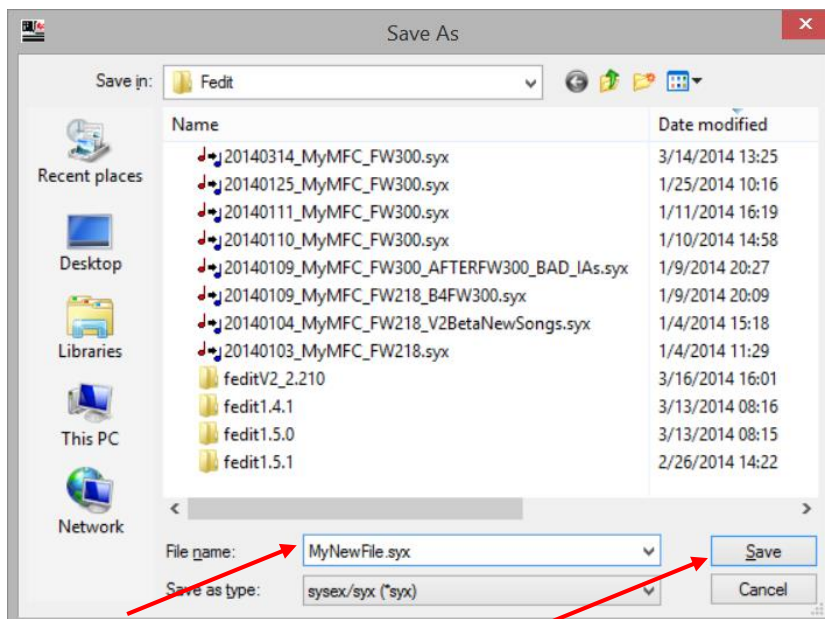
## 4.8 SAVING YOUR DUMP FILE IN FEDIT

### WHERE: Fedit Main Menu

Click the "Save" button



Enter your new file name and click "Save"





## 4.9 SENDING THE UPDATED DUMP FILE TO YOUR MFC-101 VIA FRACTAL-BOT

### Connections:

Connect Axe-FX II to MFC-101 via Ethernet cable

Connect Axe-FX II to Computer via USB cable

**NOTE:** While sending the dump file back to the MFC you do not need a MIDI cable. The Midi cable is only required when receiving dump files from the MFC.

### Axe-FX II:

I/O -> MIDI -> SEND REALTIME SYSEX:      None

USB ADAPTER MODE:                              On

### Computer:

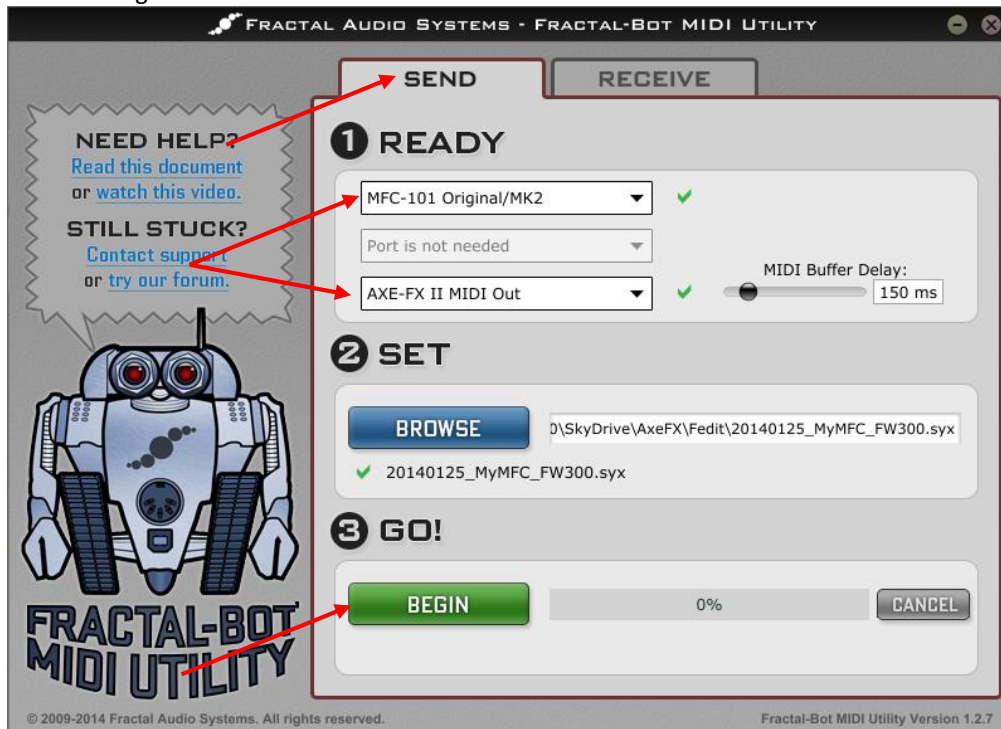
Open Fractal-Bot and click on “Send”

Select either “MFC-101 Original/MK2” or “MFC-101 MK3”

Select “Axe-FX II MIDI Out”

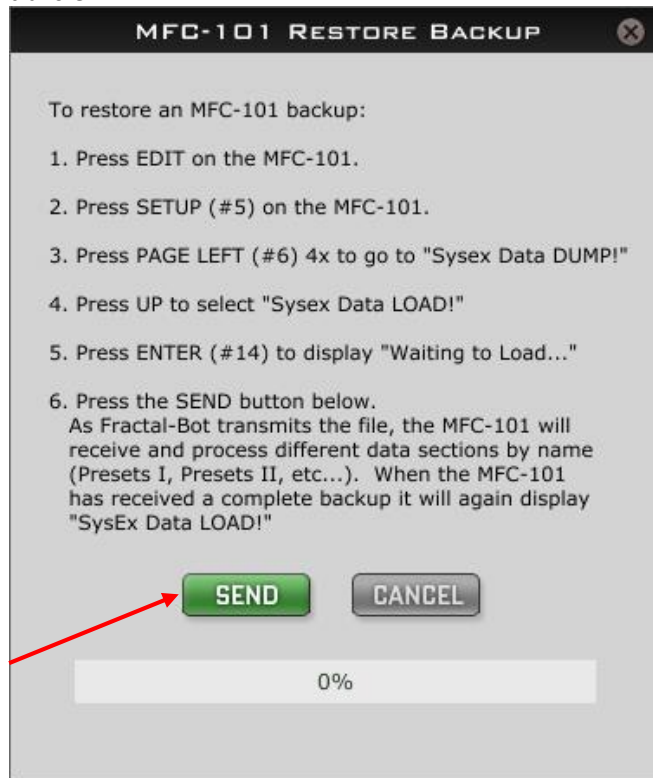
Select your dump file

Click on “Begin”





Follow the on-screen instructions to place the MFC-101 in "Sysex Data LOAD!" mode then click "SEND" to start the transfer:



**Axe-FX II:**

I/O -> MIDI -> SEND REALTIME SYSEX: All (or Tuner if that was your previous value)  
USB ADAPTER MODE: Off

**NOTE:** You must power-cycle the MFC-101 following the transfer.

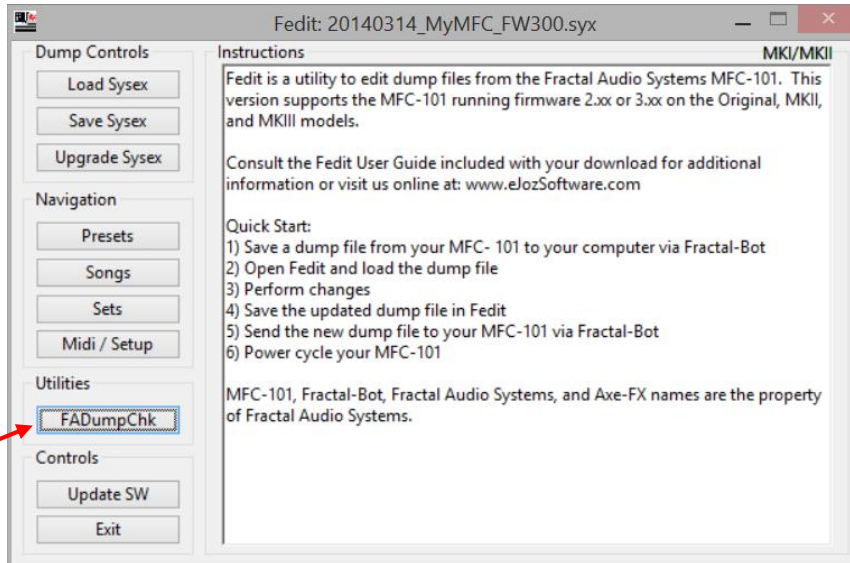
**NOTE:** If you have issues sending or receiving a valid dump with Fractal-Bot please view the appendix for an example using an Alesis USB->MIDI cable and Midi-OX.

## 4.10 FADUMPCHECK

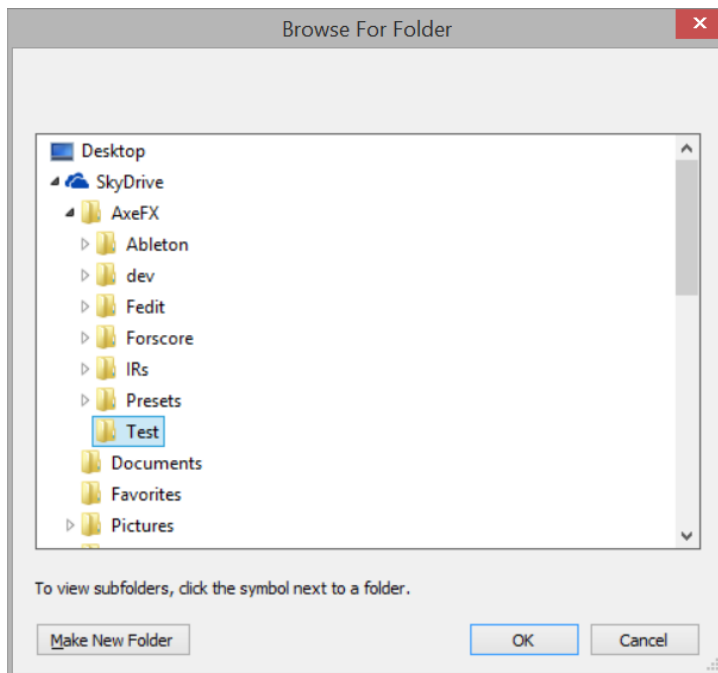
FADumpCheck is used to validate dump files generated by your Axe-FX or MFC-101.

### WHERE: Fedit Main Menu

Click the "FADumpChk" button

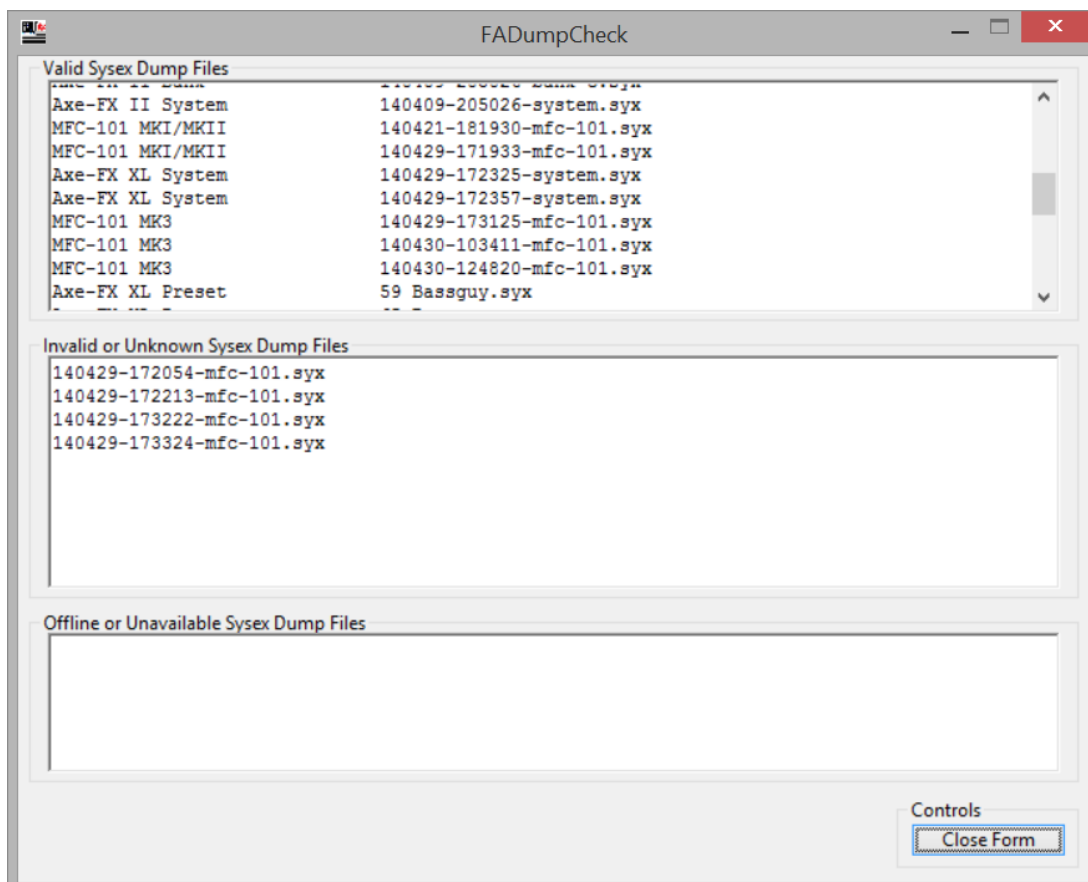


Select the folder you wish to scan and FADumpCheck will return a listing of all the .syx files that are recognized as being valid dump files for the Axe-FX (STD, Ultra, and II) and MFC-101 Original, MKII, and MKIII.



FADumpCheck will report .syx files as valid if their size and file header is correct. The will be listed as the following:

MFC-101 MKI/MKII  
MFC-101 MK3  
Axe-FX STD Preset  
Axe-FX STD System  
Axe-FX STD Bank  
Axe-FX STD/Ultra IR  
Axe-FX Ultra Preset  
Axe-FX Ultra System  
Axe-FX Ultra Bank  
Axe-FX II Preset  
Axe-FX II System  
Axe-FX II Bank  
Axe-FX II All Banks  
Axe-FX II IR  
Axe-FX XL Preset  
Axe-FX XL System  
Axe-FX XL Bank  
Axe-FX XL IR



**NOTE:** FADumpCheck looks at SysEx dump files (.syx) only. Validations are not performed on blocks (.blk files).

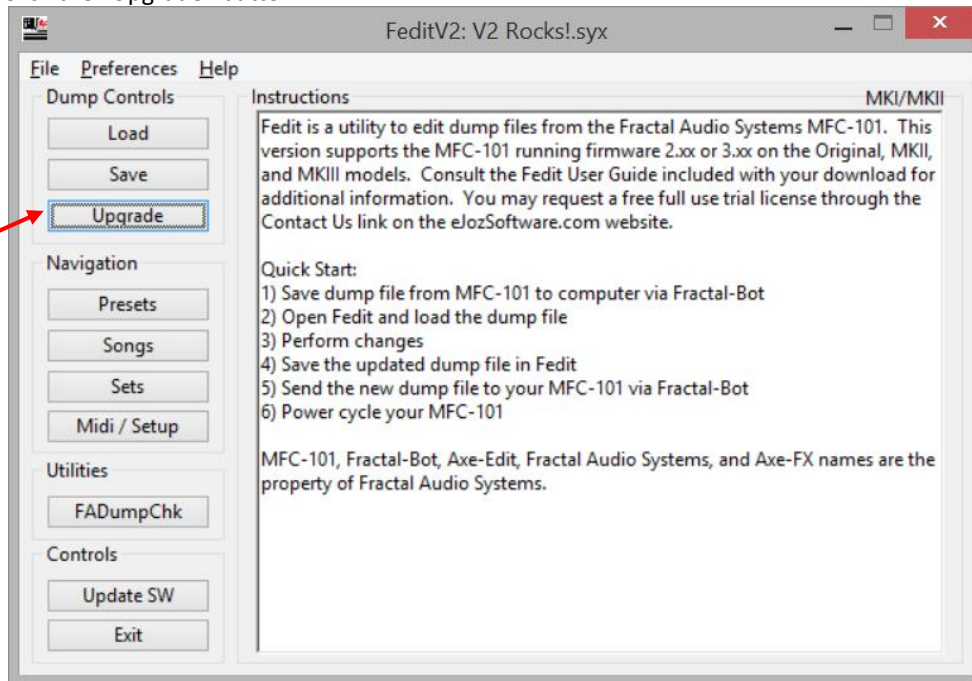
**NOTE:** FADumpCheck does not query firmware update files for the Axe-FX or MFC-101 and will list them as Invalid or Unknown if they exist in the directory where your dumps are saved.

## 4.11 UPGRADE SYSEX

This utility allows you to upgrade dump files created from previous 2.00 or later firmware revisions to the latest firmware releases. It remaps your Instant Access Switches where required so you do not have to manually remap them on the MFC. It also allows you to upgrade from the MFC-101 Original/MKII dump file format the MKIII file format so you do not have to configure your new MKIII model from scratch.

### WHERE: Fedit Main Menu

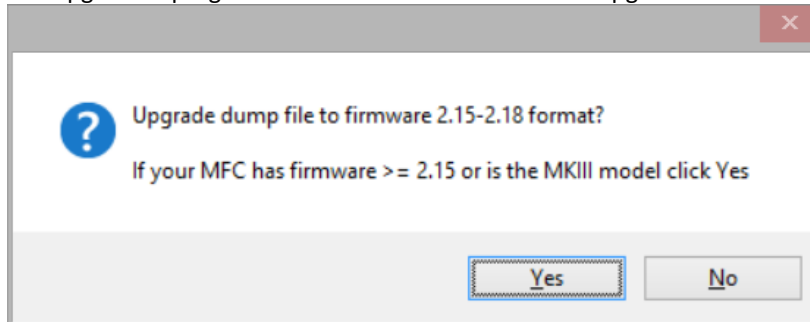
Click the "Upgrade" button



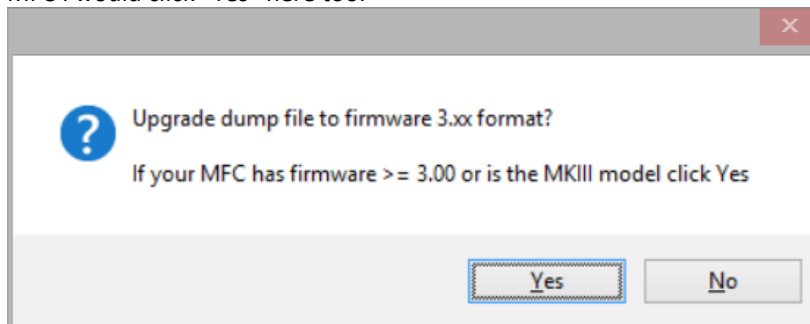
You may receive multiple prompts depending on which firmware version you are starting from. You may click “No” at any time during the prompts to stop performing upgrades.

This example is upgrading a dump file from an MFC-101 Original model running Firmware 2.01. I have since upgrade the firmware to 3.00 and want to reload my previous existing configurations.

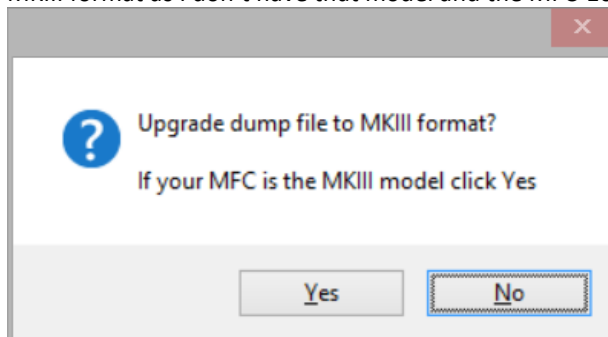
The upgrade is progressive so I would answer “Yes” to upgrade to the next dump file format:



I would also get prompted if I want to upgrade to version 3.xx format. Since I have installed firmware 3.00 on my MFC I would click “Yes” here too.



I’m still using my MFC-101 Original model so I would click “No” here. I don’t want to upgrade my dump file to MKIII format as I don’t have that model and the MFC-101 Original or MKII models would not be able to read it.



**NOTE:** You may click “No” at any step during the upgrade process, you only would want to upgrade to the version firmware currently installed or the model of your MFC-101.

**NOTE:** You may continue upgrading at any time in the future by clicking on the “Upgrade Sysex” button again.

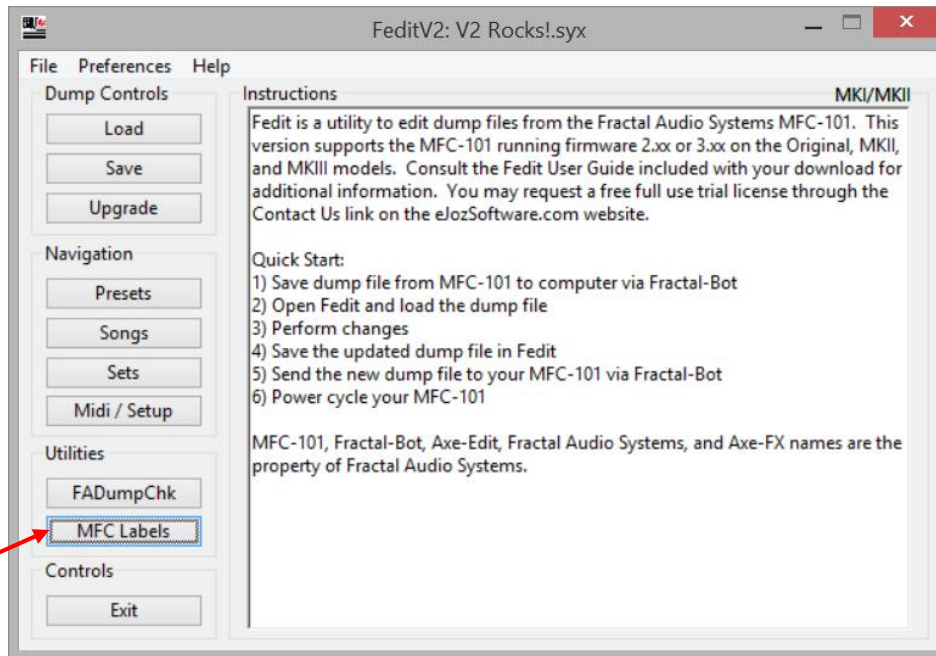
**NOTE:** “Upgrade Sysex” only performs the upgrade in memory. You must “Save Sysex” to save your changes back to a new dump file to load back to your MFC-101.

## 4.12 MFC LABELS

This utility allows you to design and print labels for your MFC-101

### WHERE: Fedit Main Menu

Click the "MFC Labels" button

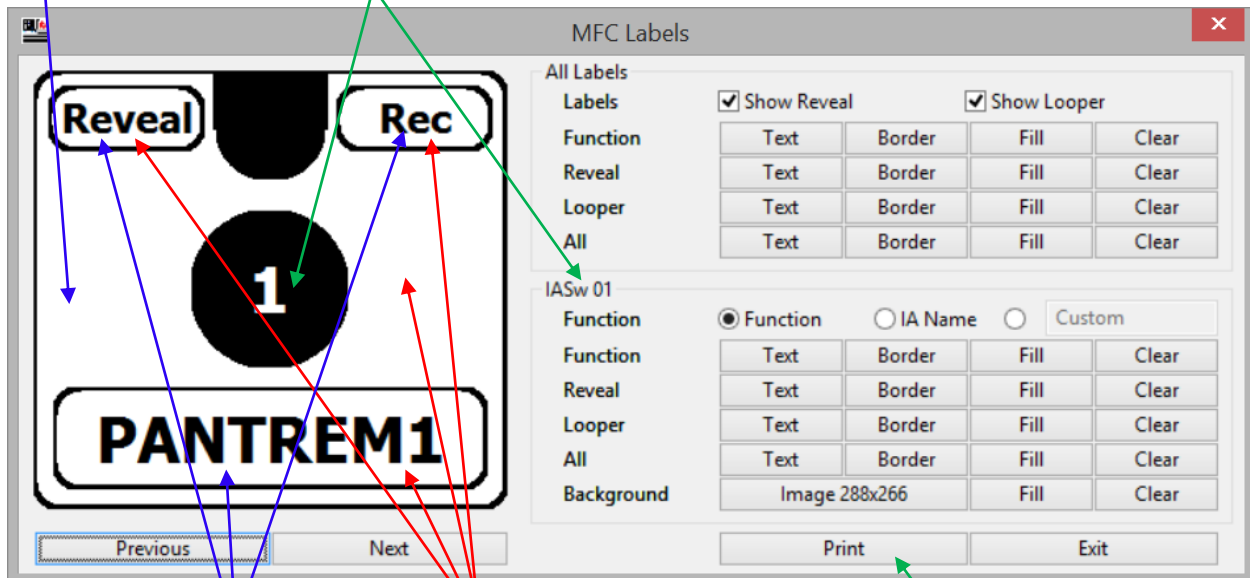


Show Reveal: When checked displays “Reveal” on labels based on your BankSize  
 Show Looper: When checked displays Looper Controls on labels

Left click to load a picture (.gif, .jpg, .png, .bmp)

Image display size is 288x266 (Crop image to size using your favorite image editor first)

Shows which Instant Access Switch you are creating label for



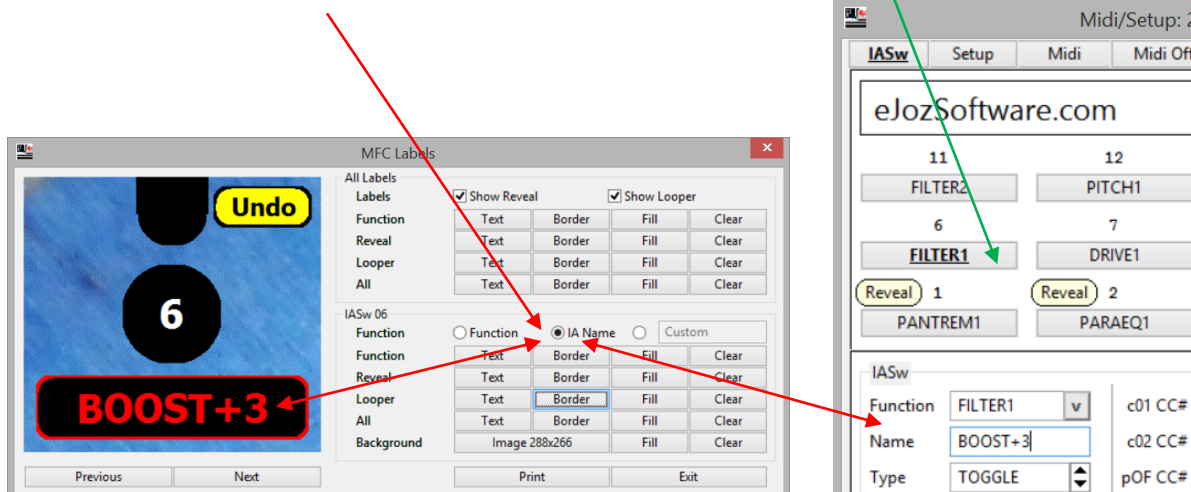
Left click to change text color

Right click to change fill color

Print your labels

Radio buttons allow you to select between Functions, IA Names, or your own custom text

Right click any IA to start the label designer

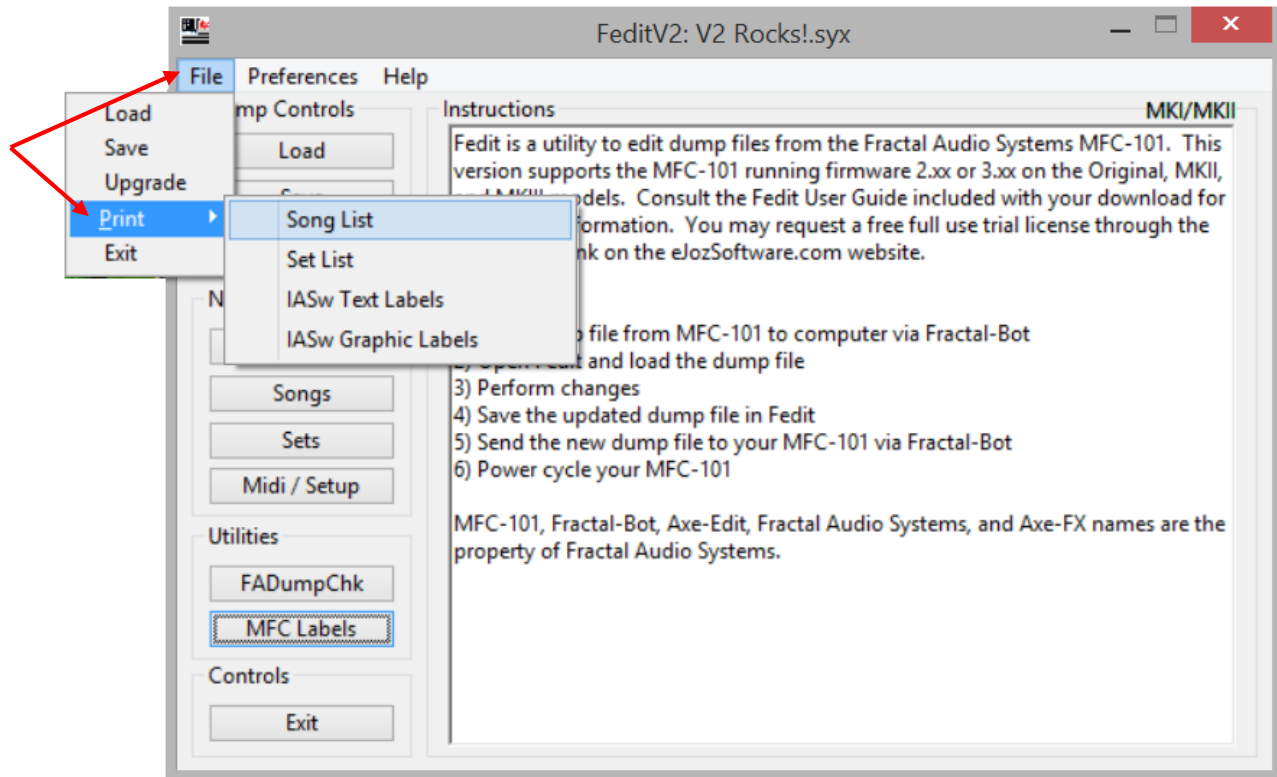


#### 4.13 PRINTING SONG/SET LISTS AND LABELS

Print your song or set list. Print text or graphic labels for your MFC-101

**WHERE: Fedit Main Menu**

Click the "MFC Labels" button





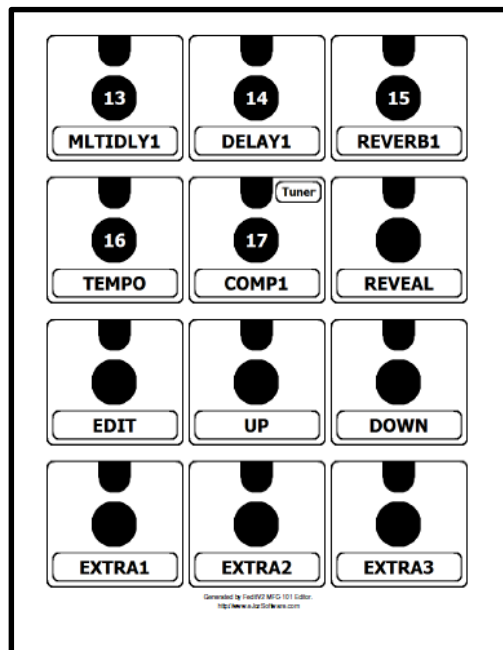
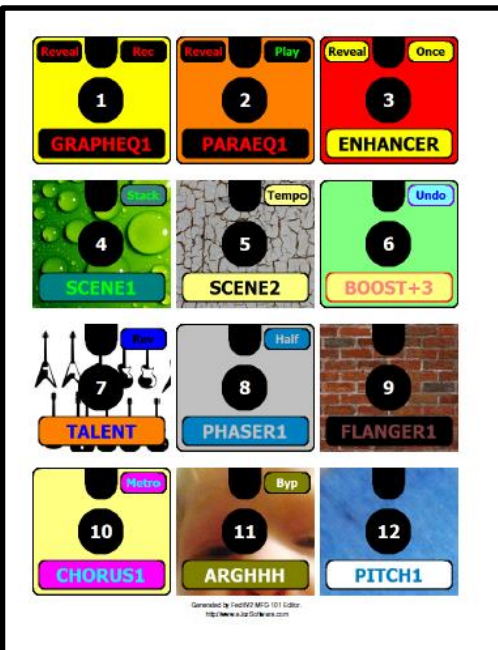
### Song/Set List sample:

1-17	18-34	35-50
ATBLove	U&UrHnd	Redy2Go
CO&Play	TSpirit	Malibu
TlkDrty	WhatsUp	Crash
RblYell	Some2Lv	Santria
Sandman	W2TchMe	Holiday
Mlkyway	JustGrl	CrushCr
Bsktcse	SpelOnU	Sedated
Cntrfld	Hnd2Slf	HMyHart
Trouble	HateSlf	BadName
HrtBrkr	WntU2Wn	Smokin
CelbSkn	G3Steps	Lowlife
DrFGood	8675309	Krypton
Seether	Call Me	EverIng
MagicMa	YourLuv	
BadRepu	LikAbtU	Gen1
Badmoon	Decode	Gen2
ShouldI	WWYoung	

### IASw Text Labels sample:

Function	Name	Looper
GRAPHEQ1	IASw 01	Rec
PARAEQ1	IASw 02	Play
ENHANCER	IASw 03	Once
SCENE1	RHYTHM	Stack
SCENE2	LEAD	Tempo
FILTER1	BOOST+3	Undo
DRIVE1	IASw 07	Rev
PHASER1	IASw 08	Half
FLANGER1	IASw 09	
CHORUS1	IASw 10	Metro
FILTER2	BOOST+5	Byp
PITCH1	IASw 12	
MLTIDLY1	IASw 13	
DELAY1	IASw 14	
REVERB1	IASw 15	
TEMPO	IASw 16	
COMP1	IASw 17	Tuner

### IASw Graphic Labels sample:



## 5 FAQs

### 5.1 WHAT ARE THE COMPUTER REQUIREMENTS FOR FEDIT?

Fedit supports:

Windows XP Service Pack 3, Windows Vista, Windows 7, and Windows 8/8.1/8.1 Update 1  
OS X Lion 10.7.x, OS X Mountain Lion 10.8.x, and OS X Mavericks 10.9.x

The minimum screen resolution you will be able to navigate within Fedit is 800x600. Higher resolution is recommended if you wish to utilize Drag/Drop between the Presets and Songs screens and/or the Songs and Sets screens.

A native Linux version and instructions for installing Fedit under Linux/Wine have been included, please reference Appendix B for additional details. The Linux platform is provided as a convenience and will be supported as a best effort. Our internal test cases were performed on Ubuntu 13.10 and Wine 1.4.

### 5.2 WHAT MFC-101 MODELS AND FIRMWARE DOES FEDIT SUPPORT?

#### MFC Models

Fedit completely supports the Original, MKII, and MKIII models running firmware 2.xx or 3.xx

#### Firmware < 2.xx

Fedit does not provide any support for firmware revisions 0.xx or 1.xx

#### Future Firmware Releases

Based on past firmware updates it has been safe to utilize the Presets, Songs, and Sets screens however the Midi/Setup screens may give you trouble until an updated version of Fedit is released. This is especially true if additional IA functions have been added (ie. SCENE 1/2, VOL INCR, and VOL DECR) as Fedit needs to be updated to reflect changes in the MFC indexes.

### 5.3 HOW DOES FEDIT WORK?

When you click the "Load" button, the dump file of your choosing is loaded into memory. Any changes you make are updated in memory as soon as you leave a field in real-time. Changes are not saved to disk unless you click the "Save" button and choose a new filename.

### 5.4 WHY DO BANK/SONG LIMIT VALUES CHANGE AUTOMATICALLY?

Fedit enforces the same rules enforced on the MFC-101. When changing PerfMode between Presets, Songs, or Sets the Bank/Song Limit is updated accordingly. When PerfMode is set to PRESET, the Bank/Song Limit is adjusted based on your BankSize.

## 5.5 WHY IS MY ENTRY YELLOW?

If the background changes to yellow that means the field contains invalid data or it has violated one of the rules enforced by the MFC-101. Hover your mouse over the field for additional information on how to resolve. Once resolved the background will return to white.

The screenshot shows a software window titled 'Songs: 20140314\_MyMFC\_FW300.syx'. It contains a list of 50 songs, each with a number and a name. Below the list is a 'Presets for Song' section for 'Song 001' (ATBLove). This section has 15 preset slots (P01 to P15). P01 is '12 FASModLead', P02 is '3 EJ Clean Main', and P03 is '999 MFC-101'. The '999' in P03 is highlighted in yellow, and a tooltip is visible over it stating 'Valid entries are 1-100 and OFF'. Other presets (P04 to P15) are set to 'OFF'. To the right of the presets is a 'Controls' section with buttons for 'Clear Song', 'Set Perfmode', and 'Close Form'.

**NOTE:** Fields in error are not written to memory if you choose to ignore the error and/or close the form.

## 5.6 ANY CONCERNS USING THE ULTRA OR STANDARD?

No. If you change your Axe-FX Mode to Ultra or STD, IA Switches assigned values not available on those devices will be changed to NONE.

The screenshot shows a dialog box with a question mark icon. The text inside reads: 'Any IA Switches assigned to blocks not supported in ULTRA mode will be changed to NONE.' At the bottom of the dialog are two buttons: 'Yes' and 'No'.

## 5.7 WHAT IS EXTERNAL PEDAL CALIBRATION ON THE SETUP SCREEN?

These values on the MFC-101 can only be set by performing calibration. It is being provided here for convenience to users familiar with the values unique to each of their pedals.

**NOTE:** It is highly recommended you perform pedal calibration on the MFC-101. Incorrect values will prevent the pedal from providing the full range of values. Pedals by the same manufacturer may have different calibrated values so unless you are 100% sure of the unique values for each of your pedals, calibrate!

## 5.8 DOES FEDIT SUPPORT DISPLAYING DISPLAY OFFSETS?

YES! Labels will change from black to blue when display offsets are enabled for a field. This can be the Axe-FX, MFC, or individual channel display offsets.

## 5.9 WHERE CAN I GET THE LATEST NEWS ON FEDIT?

Recent news will be posted on our website <http://www.eJozSoftware.com>

## 5.10 MY ANTI-VIRUS SOFTWARE HAS FLAGGED AN ISSUE WITH THE FEDIT!

In today's security age keeping the bad guys out also means legit software sometimes gets flagged. This is known as a false positive. When reported to me I validate the website integrity and work directly with the anti-virus providers. They generally address false positive reports quickly and you will see a solution with-in an update or two of their virus definitions.

Please email [support@eJozSoftware.com](mailto:support@eJozSoftware.com) with as much of the following information as possible:

- Anti-virus software name and version
- Date of current virus definitions loaded
- What the anti-virus software detected as a possible issue with the software

## 5.11 I'M HAVING TROUBLE WITH MY PURCHASE, LICENSE KEY, OR HAVE DISCOVERED A BUG!

If you are having issues with your purchase or license key please email [support@eJozSoftware.com](mailto:support@eJozSoftware.com). I will make every effort to get back to you with-in one business day. I will reply with this email address so please make sure it is not blocked by your anti-spam software.

If you are reporting a bug you may also email [support@eJozSoftware.com](mailto:support@eJozSoftware.com). Please include the following in your email to assist with diagnosing the issues:

- Which Operating System are you running
- What were you doing when you encountered the bug
- If you can reproduce the bug, please include the steps
- Please include any error messages you received

You may also PM me on the Fractal Audio Forum, my username is jjozwia

## 6.1 PERFORMING A DUMP FROM YOUR MFC-101 VIA MIDI-OX

### Connections:

MFC-101 MIDI OUT to computers MIDI IN

### WHERE: MFC-101

Click the EDIT then SETUP button

Click 4xPage Left until the display reads "SysEx Data DUMP!"

Using your favorite MIDI librarian tool receive the dump file. Instructions here are to assist those using MIDI-OX:

### WHERE: MIDI-OX

Click on View->Sysex

Sysex->Receive Manual Dump

### WHERE: MFC-101

Click the ENTER button to begin the transfer

### WHERE: MIDI-OX

Click on Display Window->Save As

**NOTE:** If you have issues grabbing a valid dump please review the configuration. Here is an example of settings used in MIDI-OX with an Alesis MIDI->USB cable.

### WHERE: MIDI-OX

Click on Sysex->Configure

Low Level Input Buffers Size: 256

Low Level Input Buffers Num: 16

Low Level Output Buffers Size: 128

Low Level Output Buffers Num: 16

Delay After F7: 120 Milliseconds

If you are successful with the settings above you may be able to speed up transfers back to your MFC by changing the following:

Low Level Output Buffers Size: 128

Low Level Output Buffers Num: 8

Delay After F7: 60 Milliseconds

Additional information regarding dumps may be found in the MFC-101 Owner's Manual.

## 6.2 SENDING THE UPDATED DUMP FILE TO YOUR MFC-101 VIA MIDI-OX

### Connections:

Computer MIDI OUT to MFC-101 MIDI IN

### WHERE: MFC-101

Click the EDIT then SETUP button

Click 4xPage Left until the display reads "SysEx Data DUMP!"

Click the INCR button and the display will read "SysEx Data LOAD!"

Click the ENTER button and the display will change to "Waiting to load..."

Using your favorite MIDI librarian tool send the dump file. Instructions here are to assist those using MIDI-OX:

### WHERE: MIDI-OX

Click on View->Sysex

File->Send Sysex File

**NOTE:** If you have issues sending a valid dump please review the configuration. Here is an example of settings used in MIDI-OX with an Alesis MIDI->USB cable.

### WHERE: MIDI-OX

Click on Sysex->Configure

Low Level Input Buffers Size: 256

Low Level Input Buffers Num: 16

Low Level Output Buffers Size: 128

Low Level Output Buffers Num: 16

Delay After F7: 120 Milliseconds

If you are successful with the settings above you may be able to speed up transfers back to your MFC by changing the following:

Low Level Output Buffers Size: 128

Low Level Output Buffers Num: 8

Delay After F7: 60 Milliseconds

Additional information regarding dumps may be found in the MFC-101 Owner's Manual.

## 7.1 FEDITV2 TIPS FOR LINUX USERS

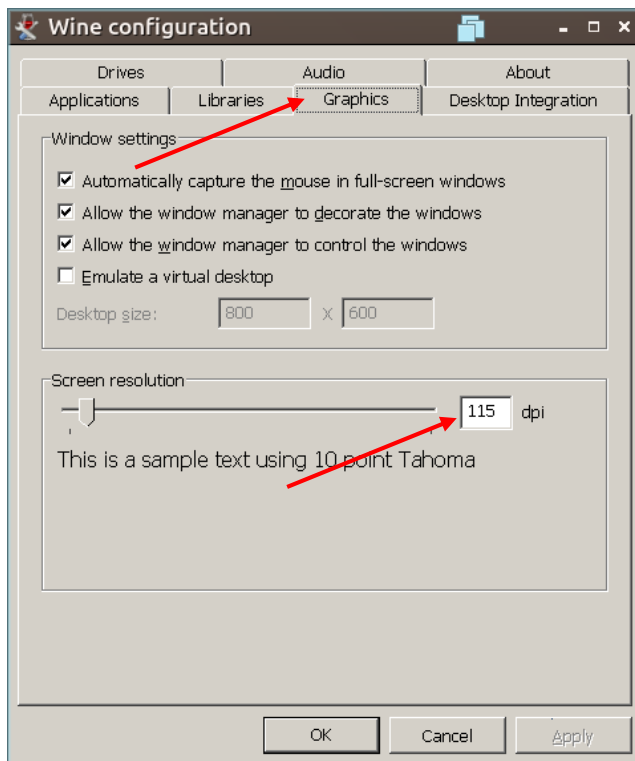
## Increasing / Decreasing Screen Resolution

Under X-Windows use CTRL+ALT+{Plus} or CTRL+ALT+{Minus} to increase or decrease the screen resolution. The plus and minus keys need to be the ones located on the numeric keypad.

## Increasing / Decreasing Wine Font DPI

You may also experiment changing the dpi for fonts in Wine. On a 10" 1920x1080 display increasing from 96 dpi to 115 dpi significantly improved the user experience. You must restart Wine applications after making this change.

user@ubuntu:~/Downloads\$ **winecfg**



Version	Date	Notes
1.1	January 24 <sup>th</sup> , 2013	Initial Draft
1.2	February 15 <sup>th</sup> , 2013	Updated for Fedit 1.1
1.3	March 10 <sup>th</sup> , 2013	Updated for Fedit 1.2
1.4	April 24 <sup>th</sup> , 2013	Updated for Fedit 1.3 (FW2.16 Support)
1.5	June 4 <sup>th</sup> , 2013	Updated for Fedit 1.4 (FW2.17/2.18 Support)
1.6	February 22 <sup>nd</sup> , 2014	Updated for Fedit 1.5.1 (FW3.xx and MKIII Support)
1.7	March 16 <sup>th</sup> , 2014	Updated for Fedit 2.212 (V2 Release)
1.8	April 23 <sup>nd</sup> , 2014	Updated for Fedit 2.223 (Screenshots, Linux)
1.9	November 2 <sup>nd</sup> , 2014	Updated for Fedit 2.251 (FW3.06 and new features)